

PRINCETON PARK DISTRICT
CITY COUNTY PARK SHELTER REPLACEMENT
PRINCETON, ILLINOIS
2025



LOCATION OF PROJECT INDICATED THIS: ★

PARK DISTRICT OFFICIALS

BOARD PRESIDENT: BRANDON NYMAN

VICE PRESIDENT: ABBIE COCHRAN

SECRETARY: DENNIS NINK

COMMISSIONERS: LES YOUNGREN
DAN SMITH

PARK BOARD ATTORNEY: BOB RUSSELL

EXECUTIVE DIRECTOR: TAMMY LANGE

ASSISTANT DIRECTOR: NICK DAVIS

RENTAL COORDINATOR: SHANNON BLOSSER-SALISBURY

AQUATIC SUPERVISOR: JAY KEPNER

RECREATION SUPERVISOR: BRETT RENNER

SUPERINTENDENT OF MAINTENANCE: NATHAN COOK



LOCATION MAP

N.T.S.

BENCHMARKS

BM A
RAILROAD SPIKE IN LIGHT POLE AT
SOUTHEAST CORNER OF SHELTER
ELEV. = 701.05

BM B
RAILROAD SPIKE IN LIGHT POLE
SOUTHWEST OF SHELTER
ELEV. = 700.06

BM C
RAILROAD SPIKE IN LIGHT POLE WEST
OF SHELTER ON WEST SIDE OF ROAD
ELEV. = 700.53

INDEX OF SHEETS

- 1 COVER SHEET
2 GENERAL NOTES AND DETAILS
3 EXISTING SITE PLAN & DEMOLITION PLAN
4 DIMENSIONAL LAYOUT PLAN
5 GRADING PLAN
6-8 BUILDING PLANS

LEGEND

EXISTING CONTOUR LINE	---XXX---
PROPOSED CONTOUR LINE	---XXX---
EXISTING WATER SERVICE VALVE	⊠
EXISTING UTILITY POLE W/ LIGHT	⊕
EXISTING DECIDUOUS TREE W/ SIZE	⊙ DIA.
AGGREGATE SURFACE	AGG
CONCRETE SURFACE	CONC
SIDEWALK	SWK
BUILDING	BLDG
BACK OF CURB	BOC
EDGE OF PAVEMENT	EOP
ELEVATION	EL
ELEVATION	ELEV
LANDSCAPE	L.S.

UTILITY SERVICE	CONTACT	TELEPHONE NO.
WATER/WASTEWATER	CITY OF PRINCETON TIM FORRISTALL	(815) 875-2631 x1701
ELECTRICAL POWER	CITY OF PRINCETON JEFF MANGRICH	(815) 875-1213 x1201
STREETS & SANITATION	CITY OF PRINCETON AARON CHRISTIANSEN	(815) 872-7331 x1501
NATURAL GAS	NICOR	(888) 642-6748
TELEPHONE	VERIZON	(800) 483-5000
CABLE	INSIGHT COMMUNICATION	(815) 875-6491



PERU MORRIS OTTAWA
ILLINOIS

PRINCETON PARK DISTRICT
CITY COUNTY PARK SHELTER REPLACEMENT
PRINCETON, ILLINOIS

COVER SHEET

ISSUED
FOR BID

CURRENT AS OF: 09/15/2025	
SCALE: AS NOTED	SHEET 1
FILE NO.: 14168.00 Y-	OF 8

The Chamlin & Associates "Specifications" shall govern the construction of this this project. This shall include Illinois Department of Transportation's "Standard Specifications for Road and Bridge Construction" adopted January 1, 2022, IDOT's "Supplemental Specifications and Recurring Special Provisions, latest edition, and ISPE's Standard Specifications for Water and Sewer Construction in Illinois" 8th edition, 2020. In case of conflict, project Plans shall control.

The location of existing underground or overhead utilities if shown on the Plans is for the convenience of the Bidder only. The Owner and/or Engineer assumes no responsibility whatsoever with respect to the accuracy or completeness of the information shown. It shall be the responsibility of the Contractor to determine the actual location of all such utilities.

All field drainage tile damaged during construction shall be repaired to the satisfaction of the Engineer or rerouted to a location determined by the Engineer.

The Contractor shall protect and preserve all control points or reference stakes set by the Engineer. Should the Contractor disturb any control point or reference stake without the prior approval of the Engineer, the Engineer may deduct the direct engineering cost incurred in the re-establishment of the control point or reference stake from compensation due the Contractor.

Each Contractor shall assume all liability, financial or otherwise, in connection with his/her Contract and shall protect and hold harmless the Owner and Engineer from any and all damages or claims that may arise due to inconvenience, delay, or loss experienced by the Contractor caused by the presence and operation of other Contractors and/or utility companies working within the limits of the Project.

Provisions shall be made to minimize the transport of sediment by vehicular traffic from the construction site. All streets shall be cleaned daily or as necessary to keep clean of sediment and debris caused by construction activities. Adjacent properties shall be protected from sediment deposition by use of an acceptable erosion control practice such as vegetative buffer strips or sediment barriers.

It will be the Contractor/Sub-Contractor's responsibility to implement and follow the SWPPP.

Before acceptance and subsequent final payment, all work shall be inspected and approved by the Owner or his representative. Final payment shall be made only after all of the Contractor's work has been approved and inspected.

Except as noted on the Plans, pavement grades shown are at the top of pavement surfaces.

Saw cutting for this Project will be incidental in all cases. This shall include saw cutting for removal of pavements, curb, combination curb & gutter, etc. It shall also include subsequent saw cutting to provide clean edges for paving work and scoring of concrete pavements and curbs as required for control joints.

For the sake of safety, traffic control, and street integrity, the Owner and Engineer will have final say on trucking routes during the construction of the Project. The Contractor shall limit trucking movements to those areas specified by the Owner and Engineer as the work progresses throughout the job.

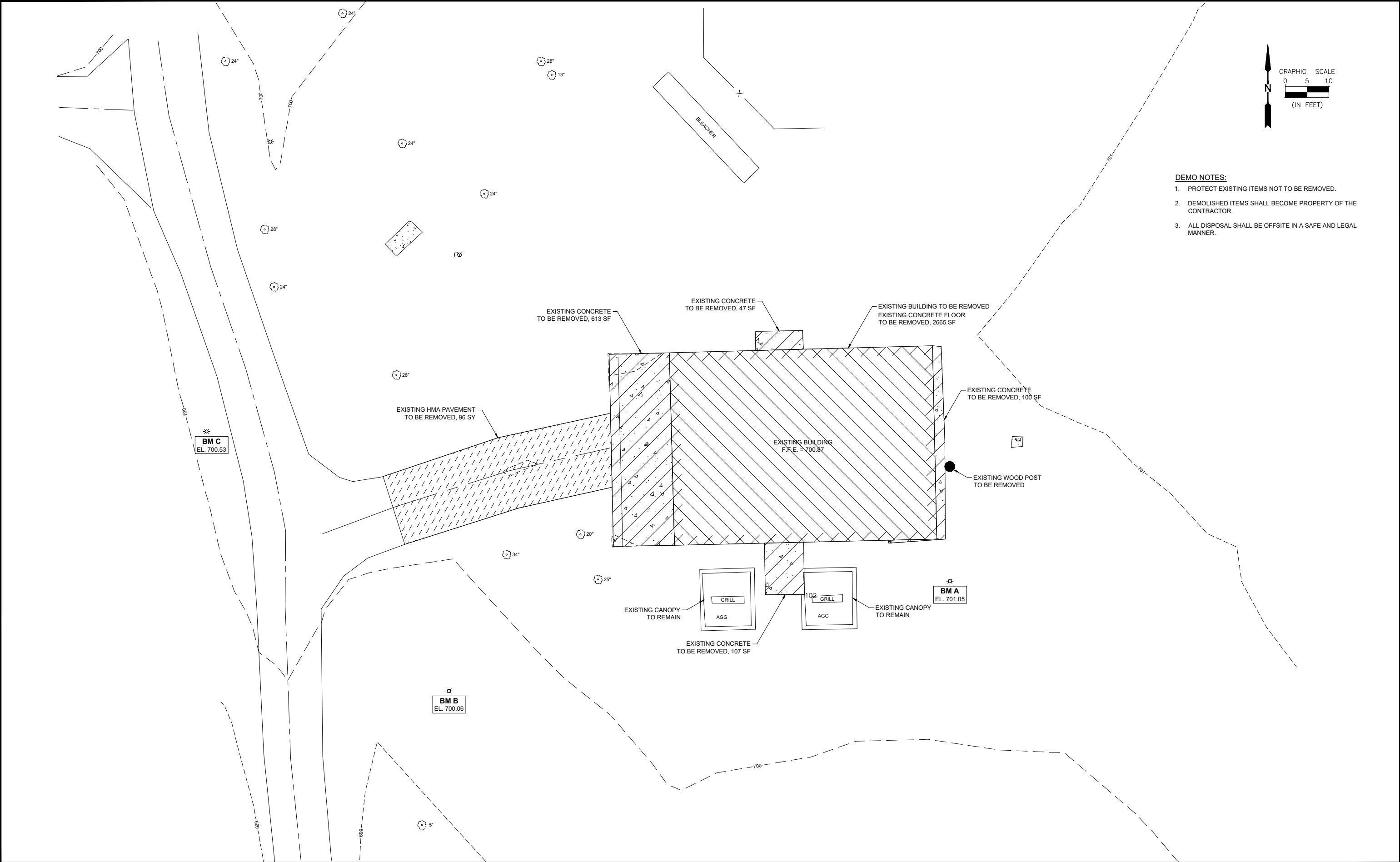
Contractor shall restore project area using Seeding Class 1, Mulch Method 2 in accordance with IDOT Standard Specifications Articles 250 and 251, Fertilizer shall be applied at a rate of 90:90:90 (NPK) lb/acre.

All exterior concrete shall be in accordance with applicable sections of the IDOT Standard Specifications and details shown on the Plans.



DRAWN BY: KED	REVISIONS				 PERU MORRIS OTTAWA ILLINOIS	PRINCETON PARK DISTRICT CITY COUNTY PARK SHELTER REPLACEMENT PRINCETON, ILLINOIS	GENERAL NOTES AND DETAILS	ISSUED FOR BID	CURRENT AS OF: 09/15/2025		
CHECKED BY: DAH	LEVEL	BY	DATE	DESCRIPTION					SCALE: AS NOTED	SHEET 2	
DATE: 07/2025									FILE NO.: 14168.00 Y-	OF 8	

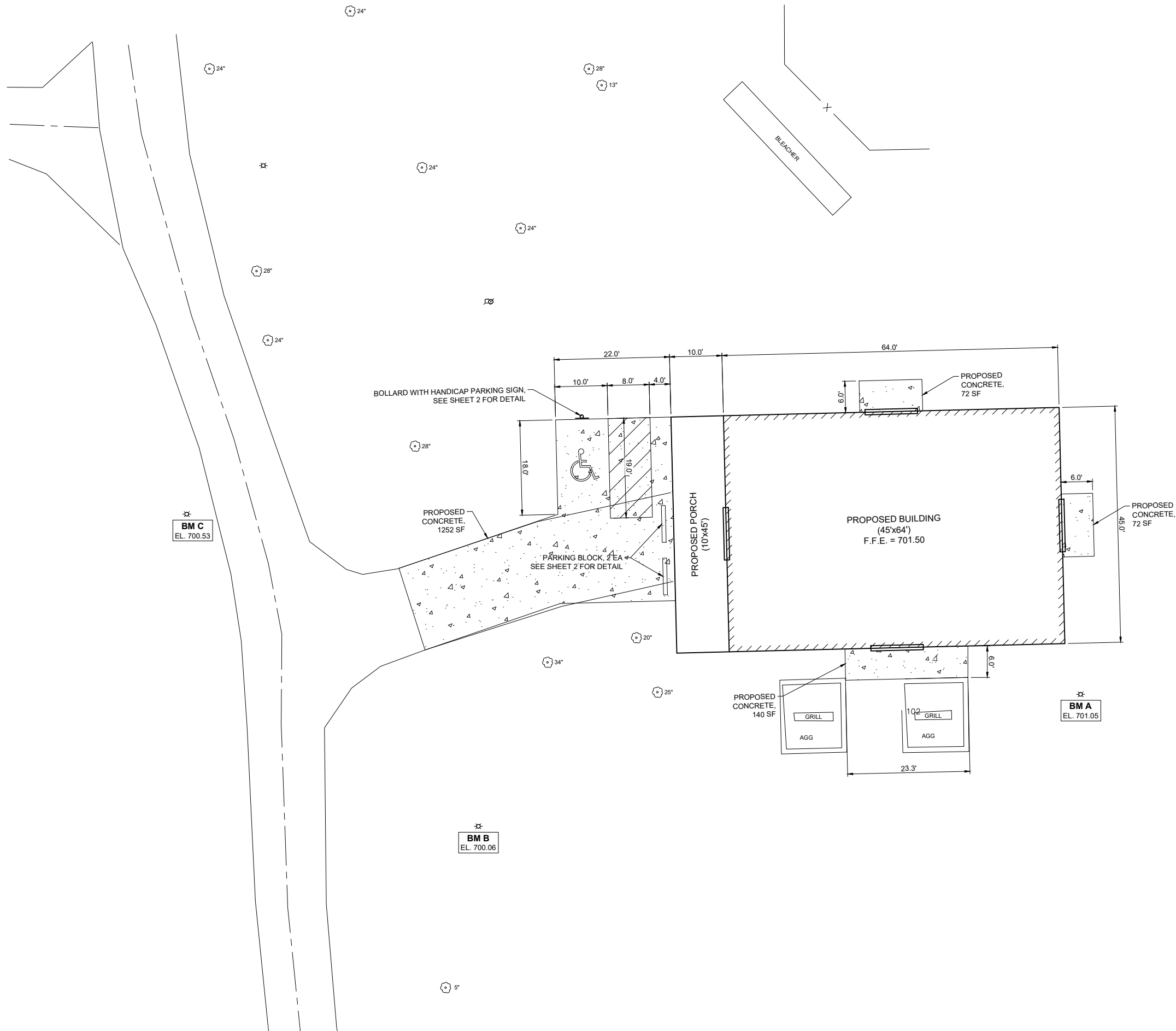
CHAMLIN & ASSOCIATES, INC. © 2025
Drawing Location: C:\USERS\14 - RECREATION\14168.00 - Princeton Park District - County Park Shelter Repl. - Princeton\CAD\Civil PLANS\003-DEMO.dwg
Last Modified: Monday, September 15, 2025 2:08:49 PM
Plotted On: Monday, September 15, 2025 2:12:06 PM
by Kurt Decker



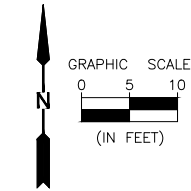
- DEMO NOTES:**
1. PROTECT EXISTING ITEMS NOT TO BE REMOVED.
 2. DEMOLISHED ITEMS SHALL BECOME PROPERTY OF THE CONTRACTOR.
 3. ALL DISPOSAL SHALL BE OFFSITE IN A SAFE AND LEGAL MANNER.

DRAWN BY: KED	REVISIONS				 PERU MORRIS OTTAWA ILLINOIS	PRINCETON PARK DISTRICT CITY COUNTY PARK SHELTER REPLACEMENT PRINCETON, ILLINOIS	EXISTING SITE PLAN AND DEMOLITION PLAN	ISSUED FOR BID	CURRENT AS OF: 09/15/2025	
CHECKED BY: DAH	LEVEL	BY	DATE	DESCRIPTION					SCALE: AS NOTED	SHEET 3
DATE: 07/2025									FILE NO.: 14168.00 Y-	OF 8

CHAMLIN & ASSOCIATES, INC. © 2025
Drawing Location: C:\USERS\14 - RECREATION\14168.00 - Princeton Park Shelter Replacement - County Park Shelter Repl. - Princeton\CAD\Civil PLANS\004-DIMLAY.dwg
Last Modified: Monday, September 15, 2025 2:08:52 PM
Plotted On: Monday, September 15, 2025 2:12:06 PM
by Kurt Decker



- NOTES:
- COORDINATE WITH ARCHITECTURAL PLANS FOR EXACT BUILDING DIMENSIONS INCLUDING BUILDING FLOOR SLABS.
 - CONCRETE PAVEMENT SHALL BE INSTALLED IN ACCORDANCE WITH IDOT STANDARD SPECIFICATIONS.
 - TURF RESTORATION REQUIRED WHERE ANY CONSTRUCTION OPERATIONS OCCUR.



DRAWN BY: KED	REVISIONS			
	LEVEL	BY	DATE	DESCRIPTION
CHECKED BY: DAH				
DATE: 07/2025				



PERU MORRIS OTTAWA
ILLINOIS

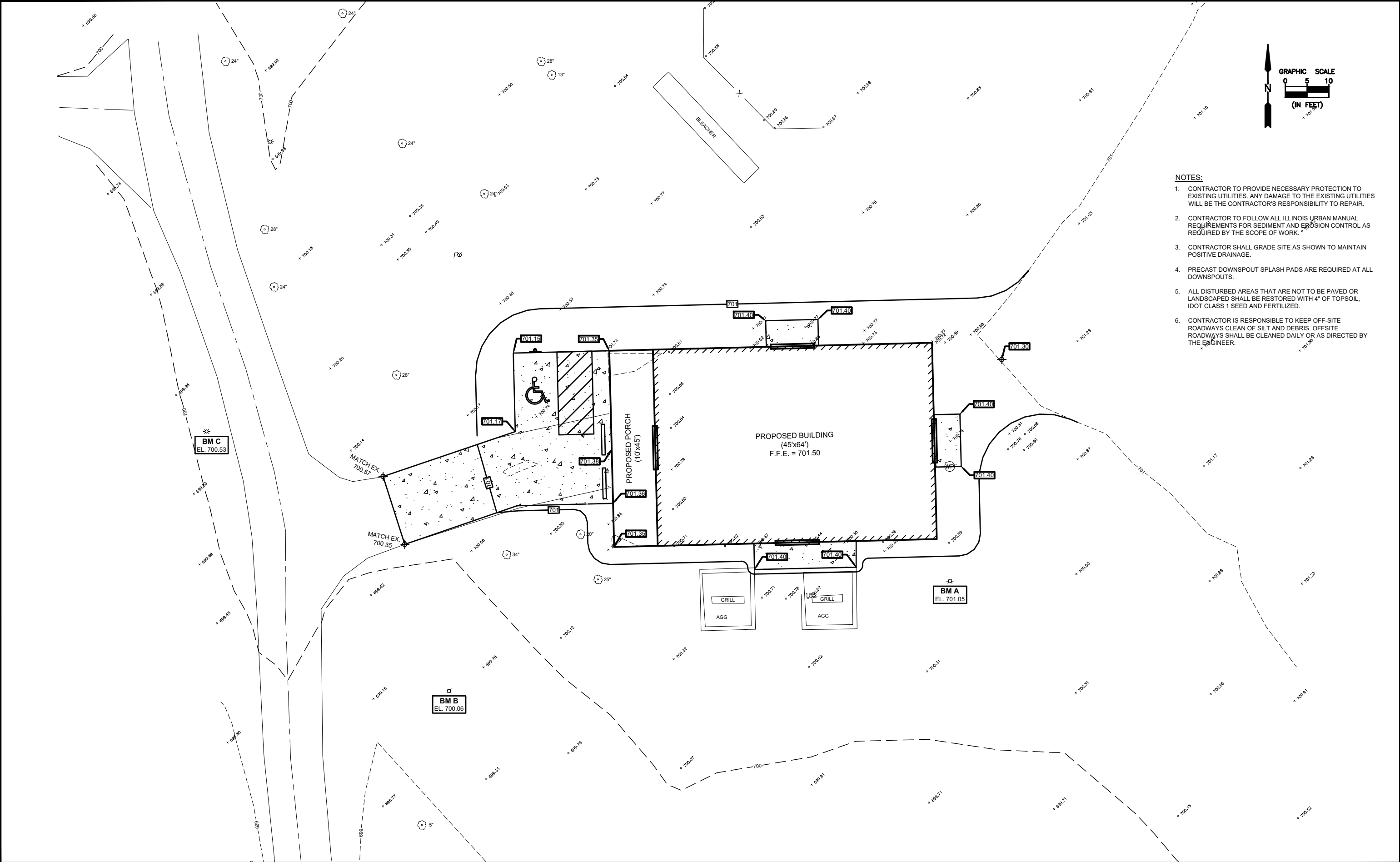
PRINCETON PARK DISTRICT
CITY COUNTY PARK SHELTER REPLACEMENT
PRINCETON, ILLINOIS

DIMENSIONAL LAYOUT PLAN

ISSUED
FOR BID

CURRENT AS OF: 09/15/2025	
SCALE: AS NOTED	SHEET 4
FILE NO.: 14168.00 Y-	OF 8

CHAMLIN & ASSOCIATES, INC. 2025
Drawing Number: 14168.00 - RECREATION\14168.00 - Princeton Park District - County Park Shelter Repl. - Princeton\CAD\Civil PLANS\005-6BADE.dwg Last Modified: Monday, September 15, 2025 2:08:55 PM Plotted On: Monday, September 15, 2025 2:12:10 PM by Kurt Becker



NOTES:

1. CONTRACTOR TO PROVIDE NECESSARY PROTECTION TO EXISTING UTILITIES. ANY DAMAGE TO THE EXISTING UTILITIES WILL BE THE CONTRACTOR'S RESPONSIBILITY TO REPAIR.
2. CONTRACTOR TO FOLLOW ALL ILLINOIS URBAN MANUAL REQUIREMENTS FOR SEDIMENT AND EROSION CONTROL AS REQUIRED BY THE SCOPE OF WORK.
3. CONTRACTOR SHALL GRADE SITE AS SHOWN TO MAINTAIN POSITIVE DRAINAGE.
4. PRECAST DOWNSPOUT SPLASH PADS ARE REQUIRED AT ALL DOWNSPOUTS.
5. ALL DISTURBED AREAS THAT ARE NOT TO BE PAVED OR LANDSCAPED SHALL BE RESTORED WITH 4" OF TOPSOIL, IDOT CLASS 1 SEED AND FERTILIZED.
6. CONTRACTOR IS RESPONSIBLE TO KEEP OFF-SITE ROADWAYS CLEAN OF SILT AND DEBRIS. OFFSITE ROADWAYS SHALL BE CLEANED DAILY OR AS DIRECTED BY THE ENGINEER.

DRAWN BY: KED CHECKED BY: DAH DATE: 07/2025	REVISIONS				 PERU MORRIS OTTAWA ILLINOIS	PRINCETON PARK DISTRICT CITY COUNTY PARK SHELTER REPLACEMENT PRINCETON, ILLINOIS	GRADING PLAN	ISSUED FOR BID	CURRENT AS OF: 09/15/2025		
	LEVEL	BY	DATE	DESCRIPTION					SCALE: AS NOTED	SHEET 5	
									FILE NO.: 14168.00 Y-	OF 8	



SCALE: 1/4" = 1'-0"



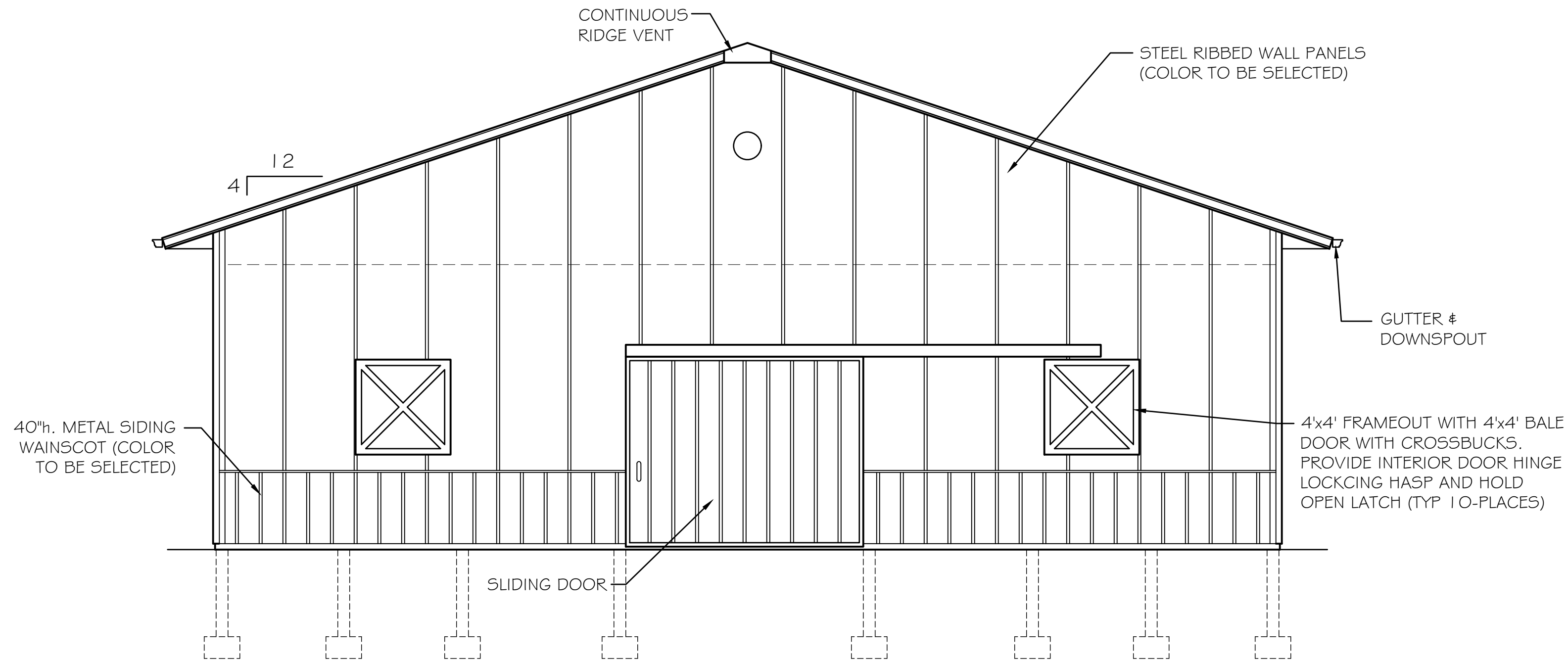
Chamlin & Associates

**PRINCETON PARK DISTRICT
CITY COUNTY PARK SHELTER REPLACEMENT
PRINCETON, ILLINOIS**

ISSUED
FOR BID

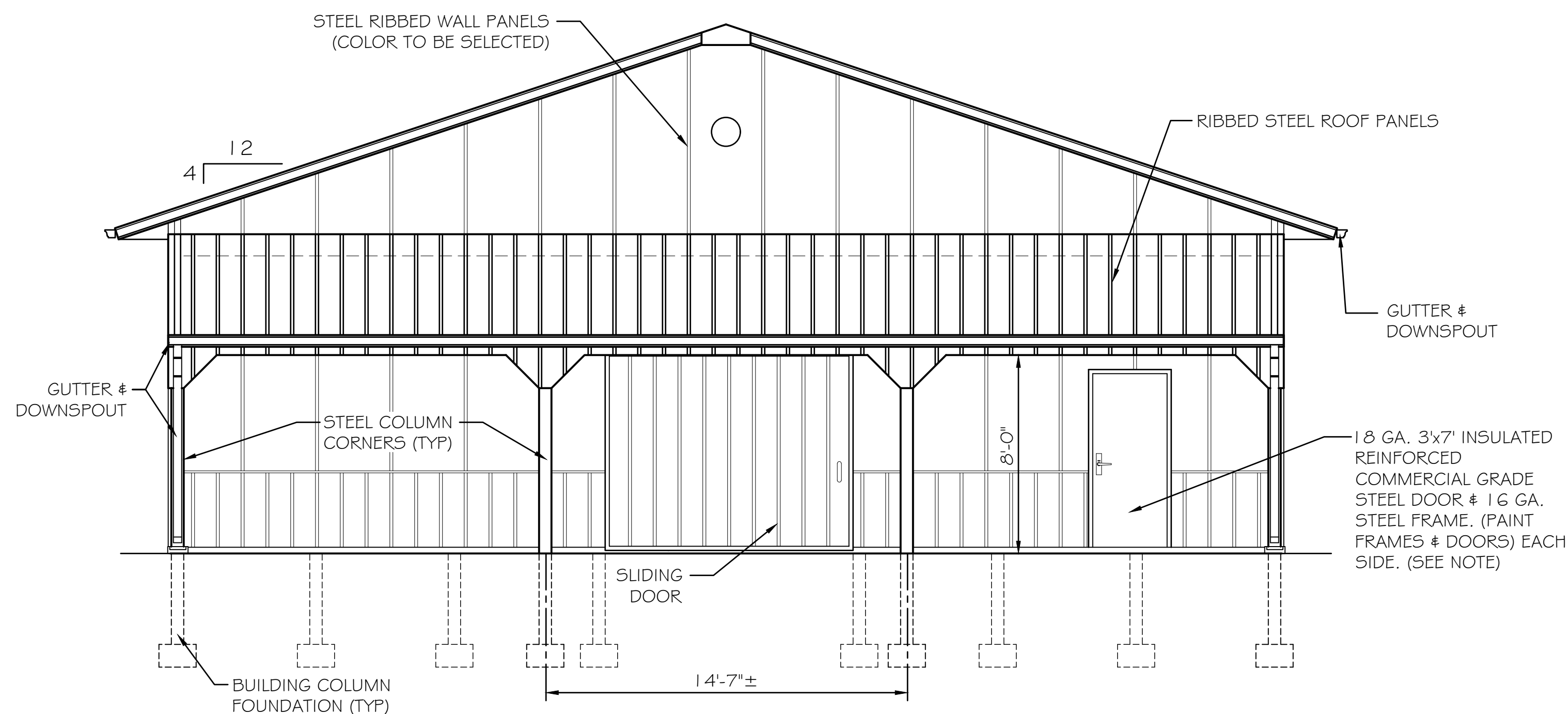
CURRENT AS OF: 09/15/2025			
SCALE: AS NOTED		SHEET 6	
FILE NO.:14168.00 Y--		OF	8

CHAMLIN & ASSOCIATES, INC. © 2020
Drawing Name: R:\USERS\14 - RECREATIONAL\14168.00 - Princeton Park District - County Park Shelter Repl. - Princeton\CAD\2.0-PROPOSED BUILDING E&W EXTERIOR ELEVATIONS.dwg
Last Modified: Monday, September 15, 2025 2:04:09 PM
Plotted On: Monday, September 15, 2025 2:10:25 PM
by Kurt Decker



EAST ELEVATION

SCALE: 1/4" = 1'-0"

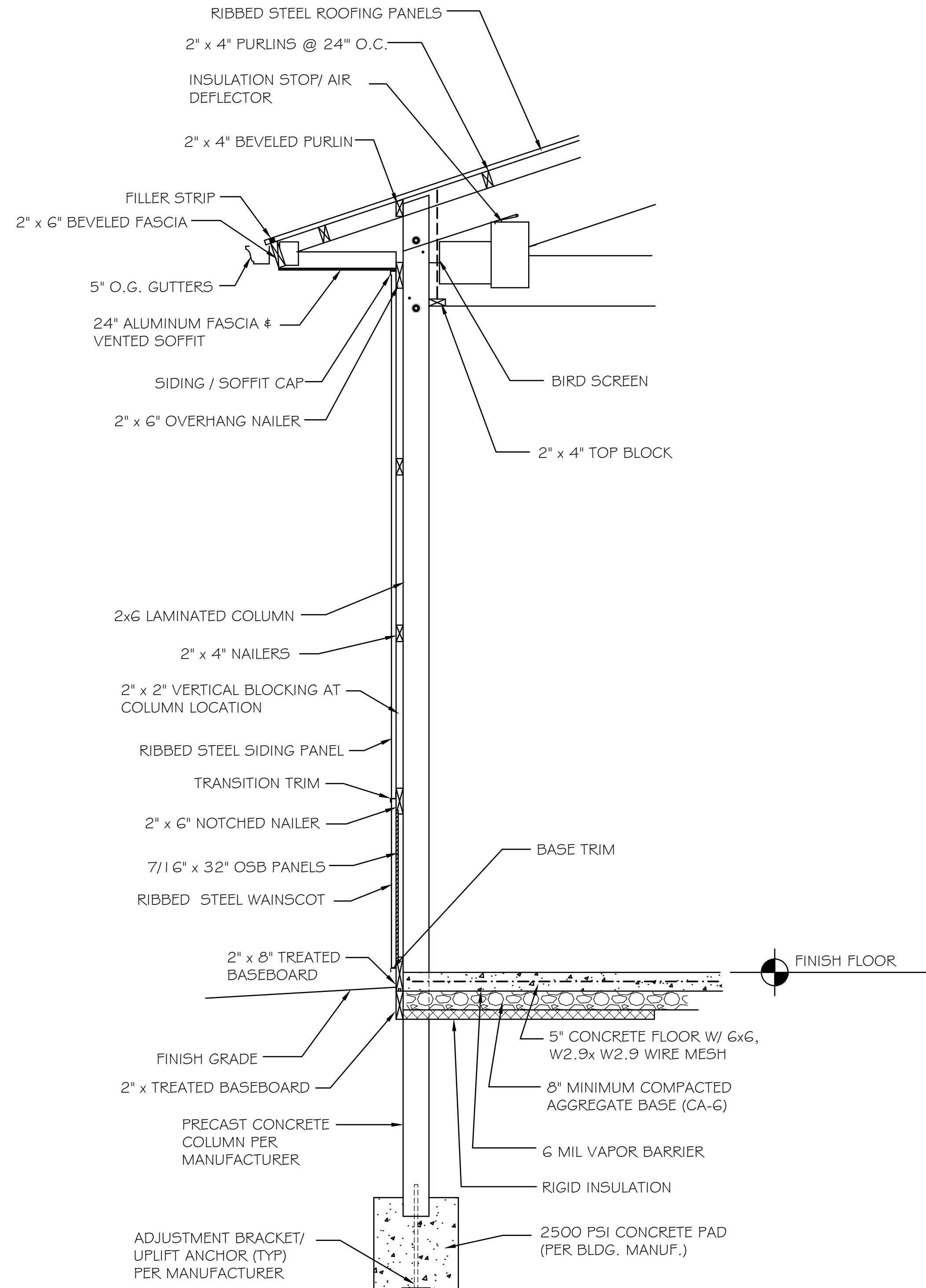


WEST ELEVATION

SCALE: 1/4" = 1'-0"

NOTE:

PROVIDE ACCESSIBLE LEVER HANDLES WITH KEYED EXTERIOR LOCK, DOOR LATCH OPERATOR BY EXTERIOR KEY ENTRY. LATCH RETURNS TO LOCK WHEN DOOR IS CLOSED AND KEY REMOVED. LATCH ALWAYS OPEN FROM INSIDE TURN OF LEVER HANDLE



TYPICAL SIDEWALL DETAIL

N.T.S.

	REVISIONS			
	LEVEL	BY	DATE	DESCRIPTION
DRAWN BY: JJW				
CHECKED BY: DAH				
DATE: 6/2025				



PERU OTTAWA MORRIS
ILLINOIS

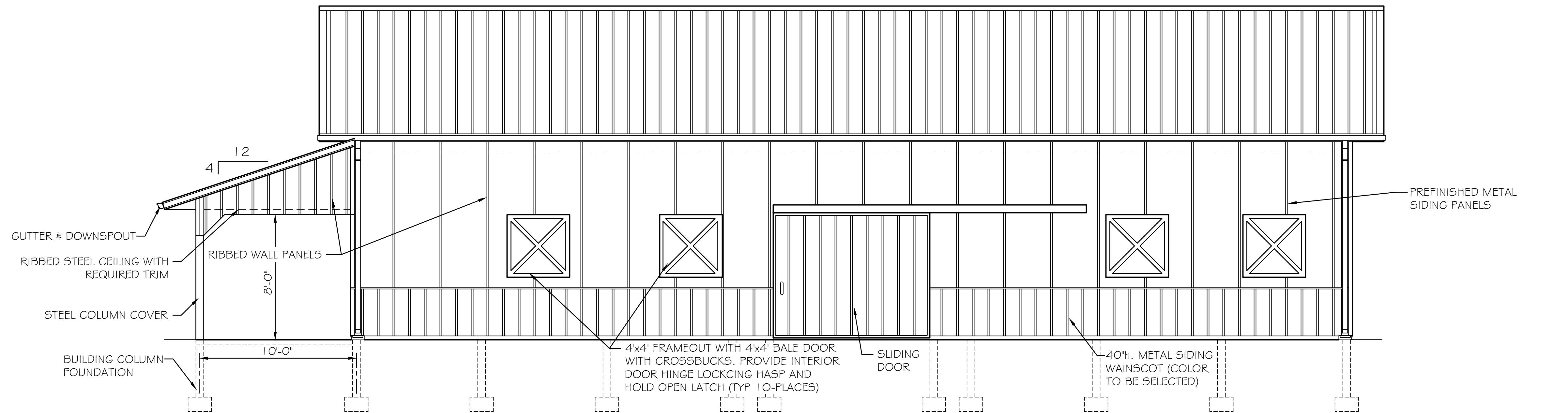
PRINCETON PARK DISTRICT
CITY COUNTY PARK SHELTER REPLACEMENT
PRINCETON, ILLINOIS

EAST AND WEST EXTERIOR ELEVATIONS
& TYPICAL SIDEWALL DETAILS

ISSUED
FOR BID

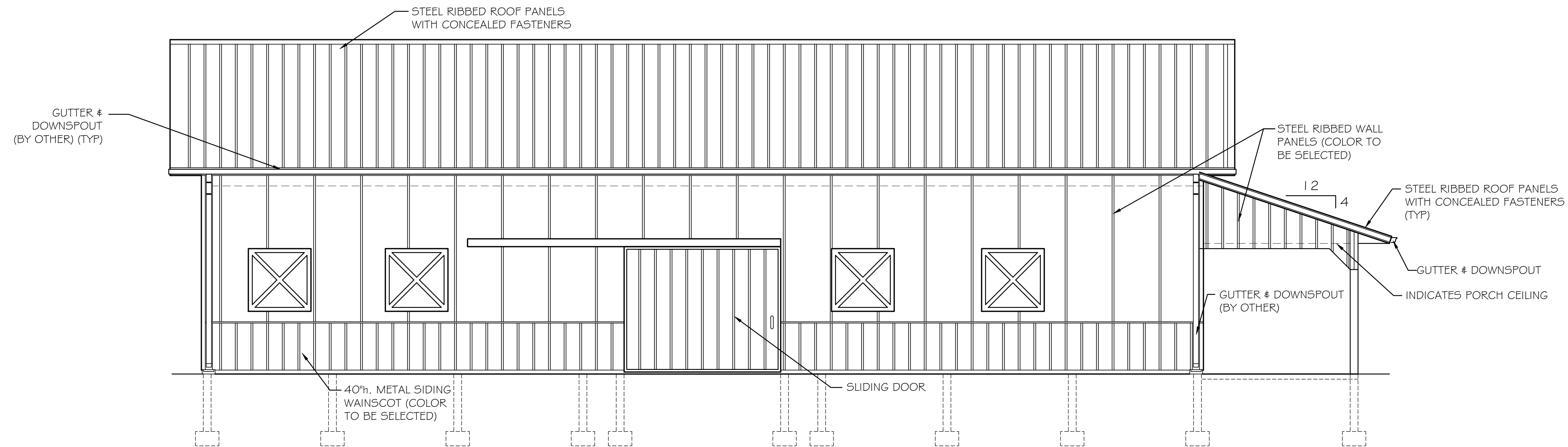
CURRENT AS OF: 09/15/2025	
SCALE: AS NOTED	SHEET 7
FILE NO.: 14168.00 Y-	OF 8

CHAMLIN & ASSOCIATES, INC. © 2020
Drawing Name: R:\USERS\14 - RECREATIONAL\14168.00 - Princeton\CAD\CIVIL PLANS\005--GRADE.dwg Last Modified: Monday, September 15, 2025 2:10:13 PM by Kurt Decker
Project: Princeton Park District - County Park Shelter Repl. - Princeton\CAD\CIVIL PLANS\005--GRADE.dwg



NORTH ELEVATION

SCALE: 1/4"= 1'-0"



SOUTH ELEVATION

SCALE: 1/4"= 1'-0"

	REVISIONS			
	LEVEL	BY	DATE	DESCRIPTION
DRAWN BY: JJW				
CHECKED BY: DAH				
DATE: 6/2025				



PRINCETON PARK DISTRICT
CITY COUNTY PARK SHELTER REPLACEMENT
PRINCETON, ILLINOIS

NORTH AND SOUTH EXTERIOR ELEVATIONS

**ISSUED
FOR BID**

CURRENT AS OF: 09/15/2025	
SCALE: AS NOTED	SHEET 8
FILE NO.: 14168.00 Y-	OF 8