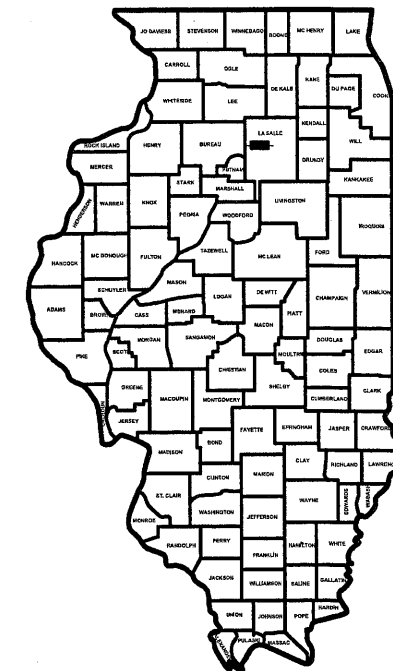


CITY OF SPRING VALLEY PROPOSED MINI PARK RESTROOM / CONCESSION BUILDING OCTOBER, 2024



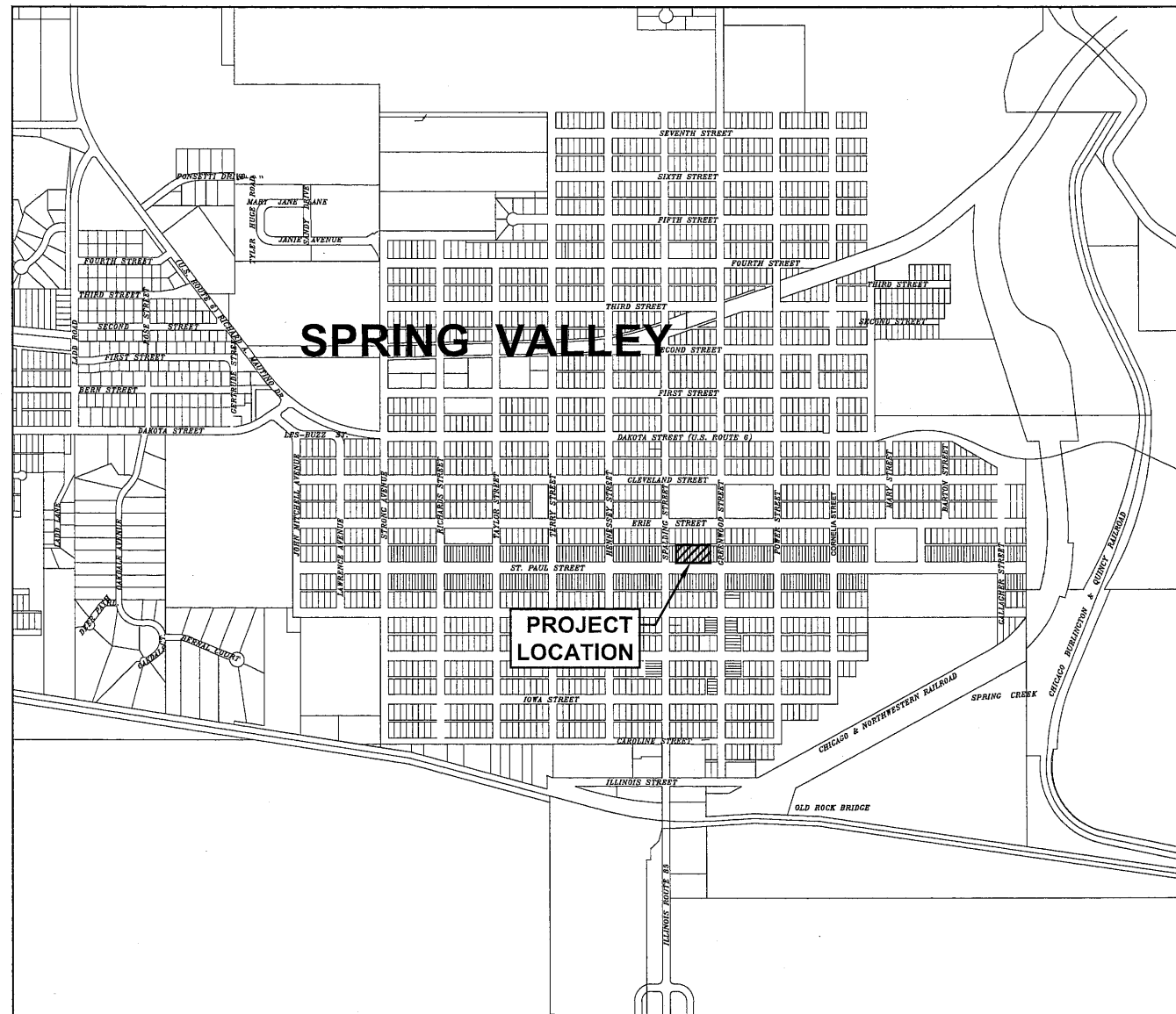
LOCATION OF PROJECT INDICATED WITH --

INDEX OF SHEETS

PAGE NO.	DESCRIPTION
C-1	COVER SHEET
A-1	BUILDING LAYOUT PLAN & DETAILS
A-2	TYPICAL BUILDING SECTION AND MISCELLANEOUS DETAILS
A-3	EXTERIOR ELEVATIONS AND ALTERNATE ROOF PLAN
P-1	PLUMBING PLAN
E-1	ELECTRICAL PLAN

APPLICABLE BUILDING CODE:

- INTERNATIONAL BUILDING CODE, 2018
- ILLINOIS STATE PLUMBING CODE, 2014
- ILLINOIS ACCESSIBILITY CODE, 2018
- AMERICANS WITH DISABILITIES ACT (ADA), 2010
- NATIONAL ELECTRIC CODE, LATEST ADDITION
- OTHER REGULATIONS MAY ALSO BE APPLICABLE



LOCATION MAP
N.T.S.

CITY OFFICIALS

MAYOR: MELANIE MALOOLEY THOMPSON

CLERK: BECKY HANSEN

ATTORNEY: ANDREW EBENER

ALDERMEN: MIKE HERMANN
CJ VANSCHAICK
CHRIS AFFELT
JEFF CHIAVENTONE
DEB BALTKAUSKI
GREG CAMPBELL
KEN BOGACZ
DAVE PELLEGRINI


SURVEYOR / ENGINEER:

CHAMLIN & ASSOCIATES, INC.
4152 PROGRESS PARK BLVD.
PERU, IL. 61354
PHONE: (815) 223-3344
FAX: (815) 223-3348



UTILITY SERVICE	CONTACT	TELEPHONE NO.
POTABLE WATER & SANITARY SEWER	CITY OF SPRING VALLEY SUPT. OF PUBLIC WORKS	(815)-664-4752
ELECTRICAL POWER	AMEREN.	(800) 892-0123
NATURAL GAS	AMEREN	(800) 892-0123
TELEPHONE	FRONTIER	(800) 921-8108
CABLE	MEDIACOM	(800) 892-0123



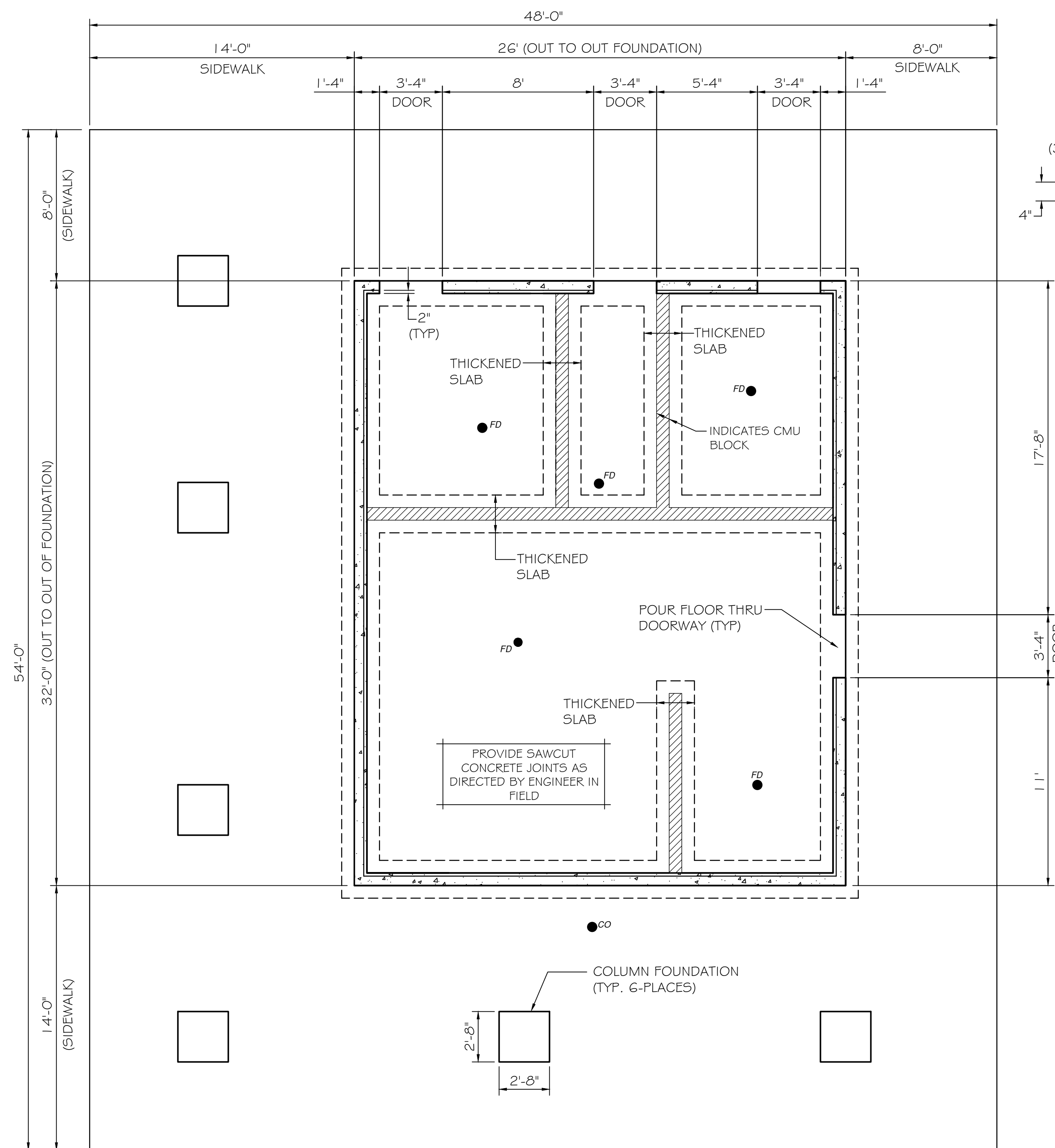
 PERU MORRIS
OTTAWA MENDOTA
ILLINOIS

DRAWN BY: DS	REVISIONS			
	LEVEL	BY	DATE	DESCRIPTION
CHECKED BY: JLS				
DATE: 10/01/2024				

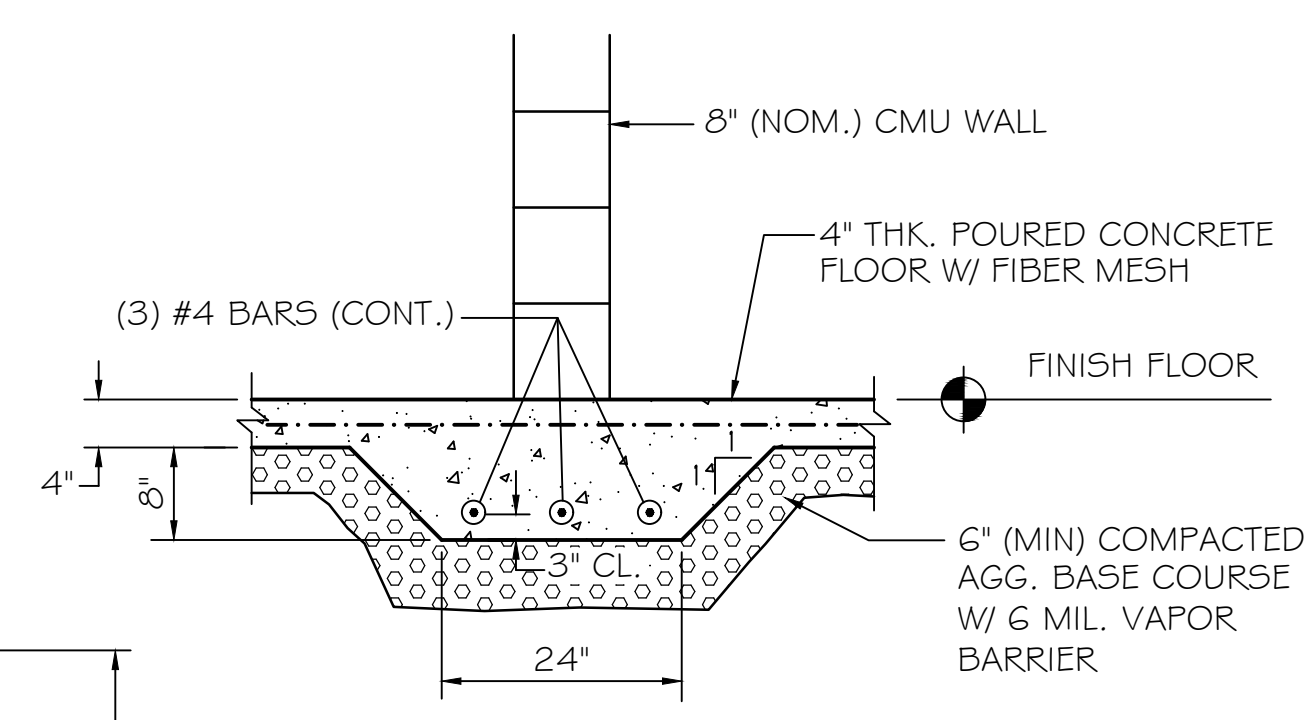
BID SET	CURRENT AS OF: 10/09/2024	
	SCALE: AS NOTED	SHEET 1
	FILE NO.: 2489.00 Y-	OF 8

CHAMLIN & ASSOCIATES, INC. © 2022
 Drawing Name: C:\Users\jls\OneDrive - Spring Valley\Mini Park-Concession Stand 2024\CAD\C-1-COVER.dwg
 Last Modified: Monday, October 14, 2024 2:35:47 PM
 Plotted On: Thursday, October 17, 2024 2:40:32 PM
 by: Josh Wankowick

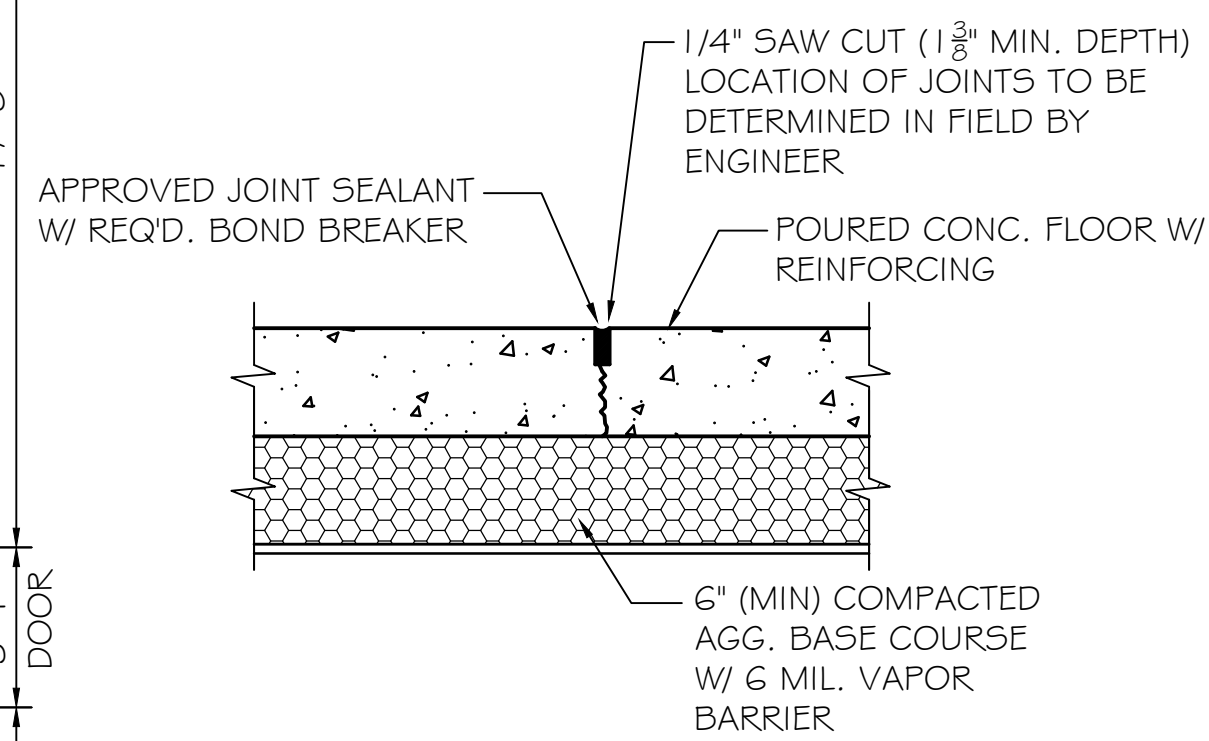
CHAMLIN & ASSOCIATES, INC. © 2023
 Drawing Name: G:\Users\j2.02489-00-Spring Valley-Mini Park-Concession Stand 2024\CAD\A-1 Building Layout Plan & Details - Revised 8.26.2024.dwg Last Modified: Monday, October 14, 2024 1:32:58 PM Plotted On: Monday, October 14, 2024 2:37:36 PM by Tim Harris



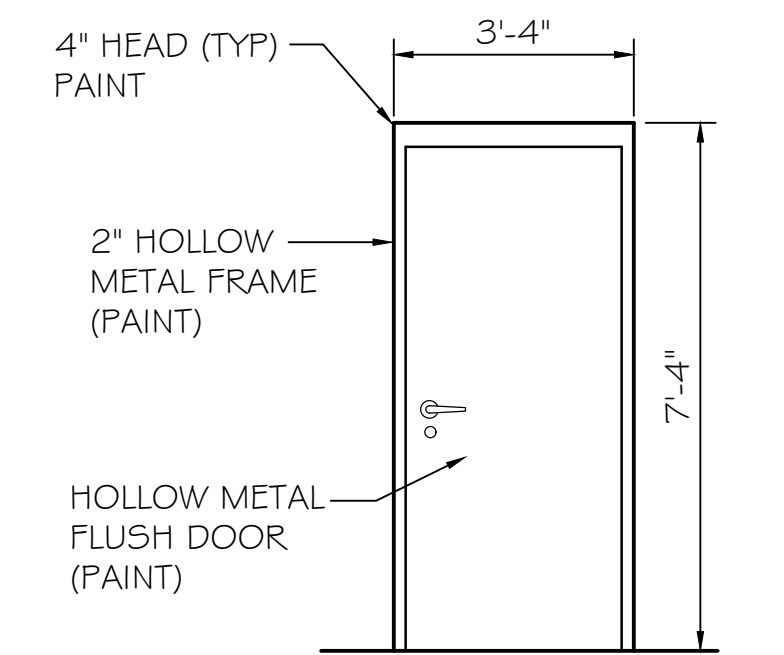
FOUNDATION PLAN
SCALE: 1/4" = 1'-0"



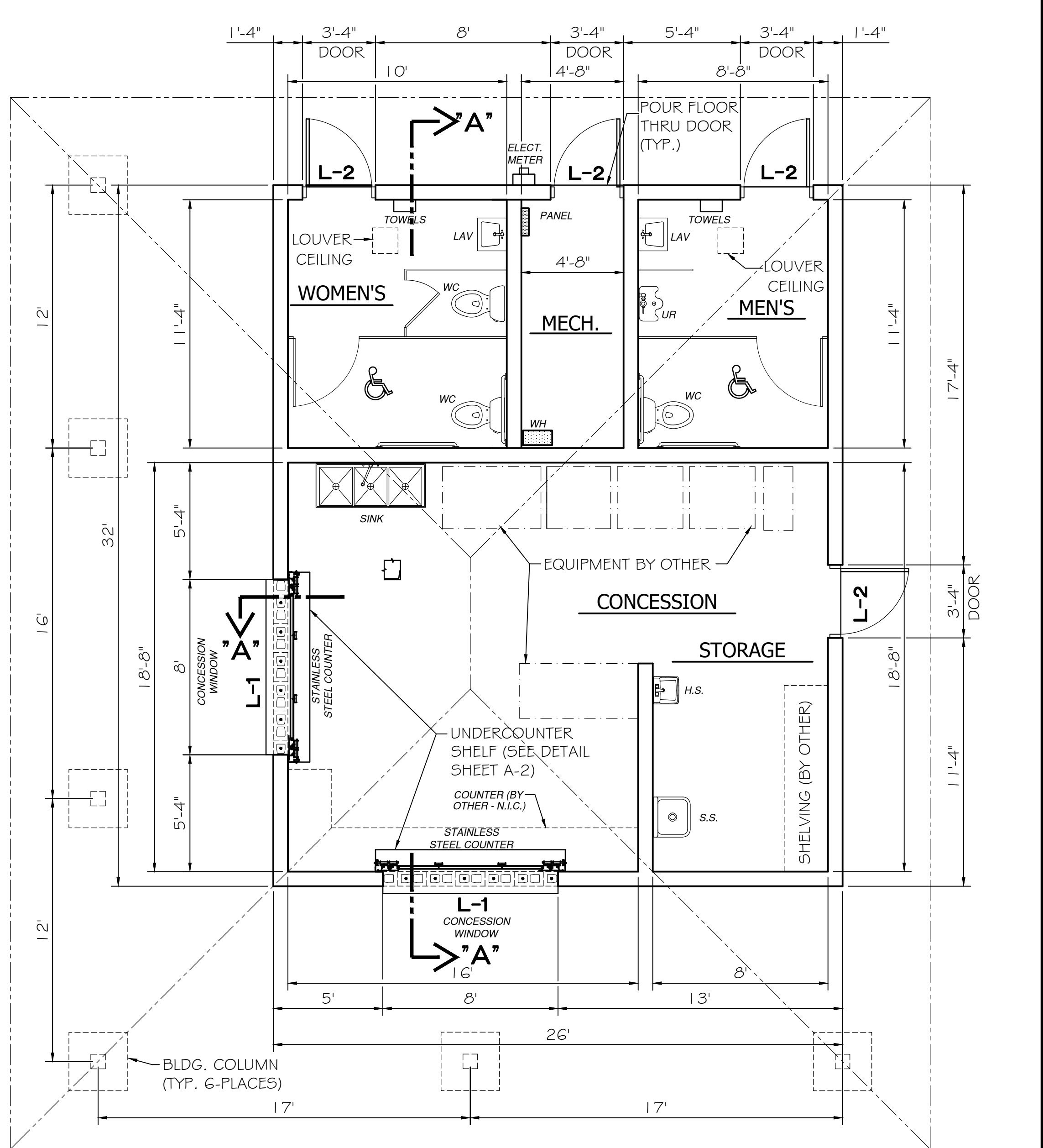
THICKENED SLAB DETAIL UNDER CMU WALLS
N.T.S.



INTERIOR CONCRETE CONTROL JOINT DETAIL
N.T.S.

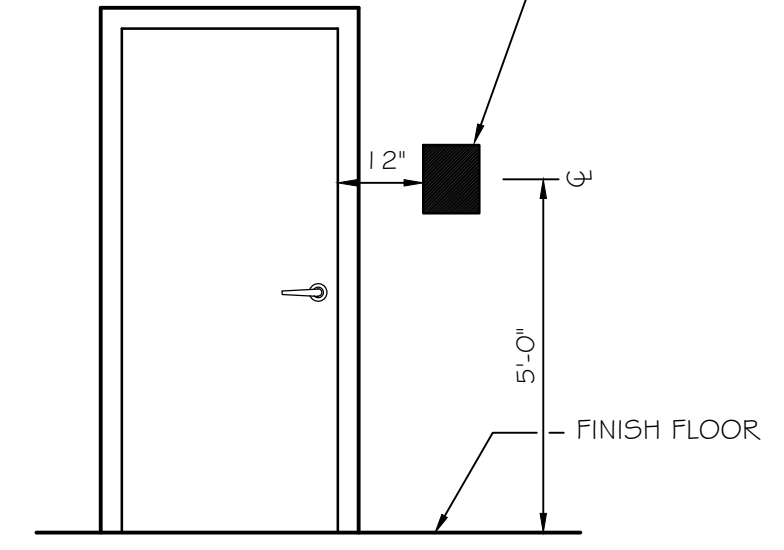


TYPICAL SINGLE DOOR

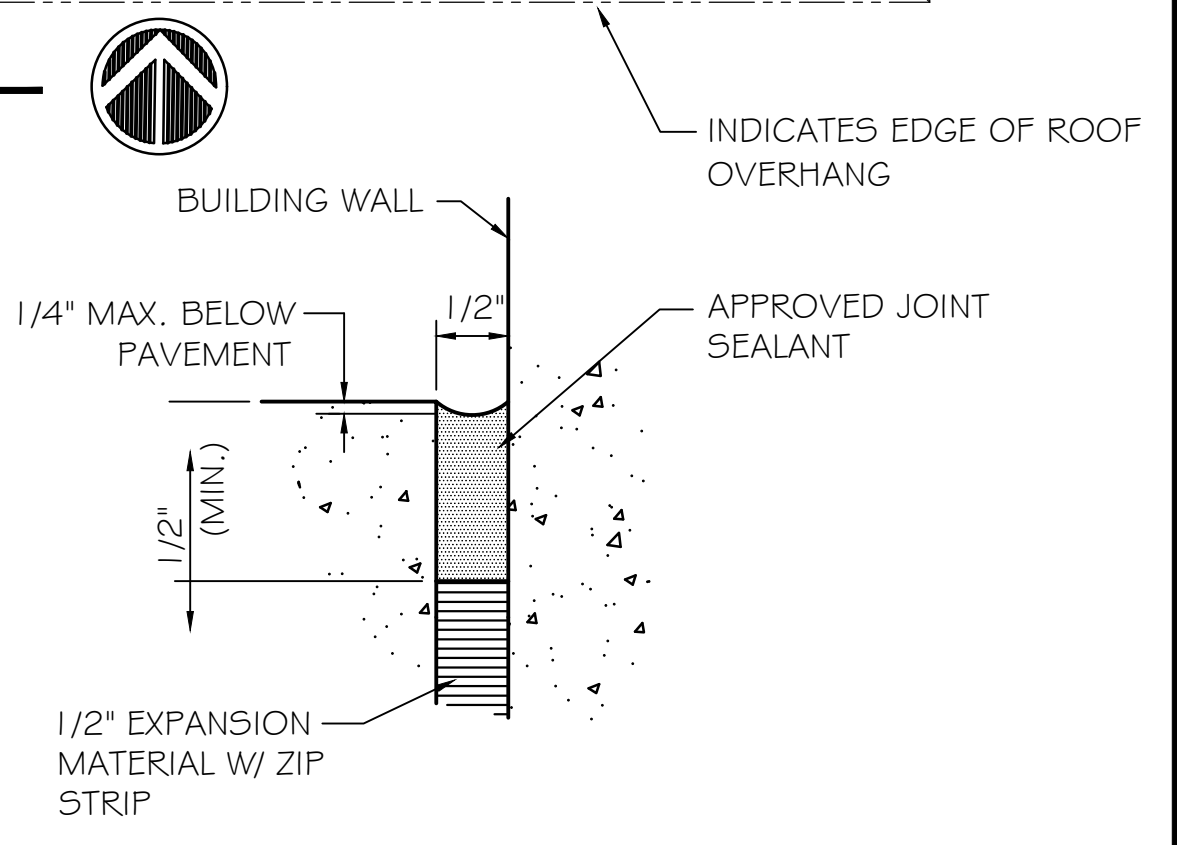


LAYOUT PLAN
SCALE: 1/4" = 1'-0"

ADA DIRECTIONAL SIGNAGE "GEMINI"-BRONZE, (7"x8.5"x .25") W/ SAND BACKGROUND. PROVIDE STYLE REQUIRED FOR EACH RESTROOM USAGE.



TYPICAL REST ROOM SIGNAGE PLACEMENT



EXTERIOR CONCRETE SEALANT DETAIL @ WALL PERIMETER
N.T.S.

GENERAL NOTES :

- WALL LOUVERS: ("GREENHECK") OR APPROVED EQUAL TYPE "A" - KICK RESISTANT PAINTED METAL (1 G-GA.) MIN. WALL LOUVER W/ "KYNAR 500" FINISH. LOUVER SHALL HAVE A FREE AREA = 1 00 (SQ. IN.) MIN. EACH. CEILING GRILLE: ("CARNES") OR APPROVED EQUAL TYPE "B" - PAINTED METAL (1 G-GA.) MIN. CEILING LOUVER W/ "KYNAR 500" FINISH. LOUVER SHALL HAVE A FREE AREA = 1 00 (SQ. IN.) EACH.
- FINISHES:
 - ALL METAL DOORS & FRAMES SHALL RECEIVE PAINTED FINISH OF TWO COATS OF HI-BUILD EPOXY COATINGS (PAINT TOP & BTM. OF DOORS).
- THE CONTRACTOR SHALL APPLY A LITHIUM BASED CONCRETE DENSIFIER, "LITHI-TEK 4500" OR APPROVED EQUAL, TO THE ENTIRE FLOOR AREA (830± S.F.). APPLICATION SHALL BE AS RECOMMENDED BY THE MANUFACTURER. VERIFY CONCRETE SURFACE FINISH WITH MANUFACTURER PRIOR TO POUR.
- REST ROOM TOILET PARTITIONS & URINAL SCREENS SHALL BE FLOOR & WALL MOUNTED GALVANNEALED STEEL PANELS (20-GAUGE), GRAFFITI RESISTANT, DENT & SCRATCH RESISTANT, CORROSION RESISTANT, STAIN RESISTANT W/ BAKED ENAMEL FINISH. COLOR SHALL BE SELECTED FROM MANUF. STANDARDS (12 MIN.).

CONCRETE AND REINFORCING NOTES:

- ALL CONCRETE SHALL MEET THE REQUIREMENTS FOR CLASS SI CONCRETE PER ARTICLE 1 020 OF THE IDOT STANDARD SPECIFICATIONS FOR ROAD AND BRIDGE CONSTRUCTION, CURRENT EDITION.
- REINFORCING STEEL SHALL MEET ASTM AG 15 GRADE 60.
- FIBER MESH SHALL CONSIST OF SYNTHETIC FIBERS ADDED TO THE CONCRETE MIX OF A SUITABLE TYPE AND IN SUFFICIENT QUANTITY TO ACT AS A REPLACEMENT FOR TEMPERATURE AND SHRINKAGE REINFORCEMENT AS RECOMMENDED BY THE FIBER MANUFACTURER. FIBER TYPE AND DOSAGE TO BE APPROVED BY THE ENGINEER.

NOTE:
CONTRACTOR SHALL HANDLE AND PLACE CONCRETE JOINT SEALER IN STRICT ACCORDANCE WITH THE MANUFACTURER'S RECOMMENDATIONS.

DRAWN BY: MSR	REVISIONS			
	LEVEL	BY	DATE	DESCRIPTION
CHECKED BY: MSR				
DATE: 10/2024				

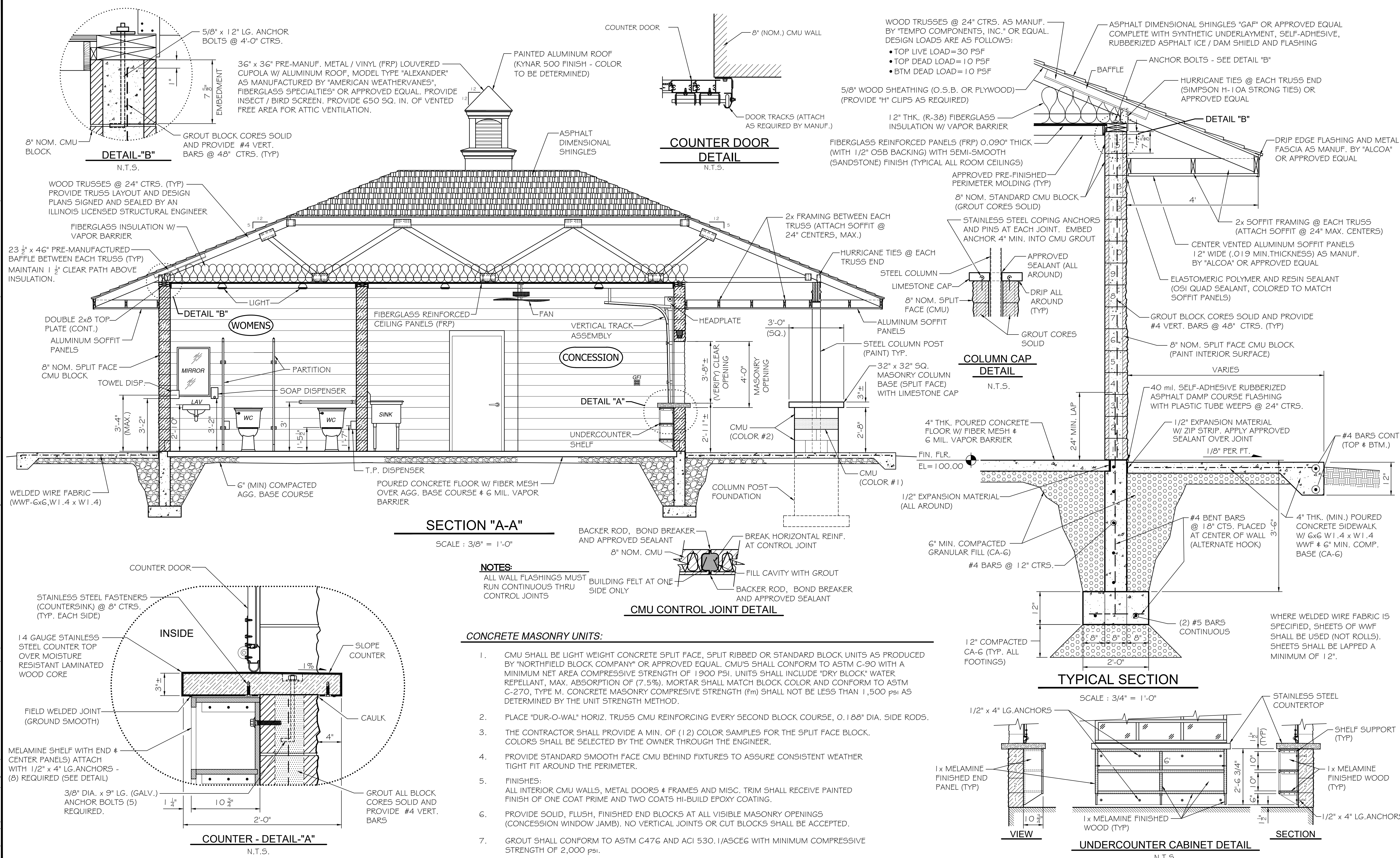

PERU MORRIS
 OTTAWA MENDOTA
 ILLINOIS

CITY OF SPRING VALLEY
 PROPOSED MINI PARK
 RESTROOM / CONCESSION BUILDING
 SPRING VALLEY, ILLINOIS

BUILDING LAYOUT PLAN AND DETAILS
BIDDING PLANS

CURRENT AS OF: 10/01/2024	
SCALE: AS NOTED	SHEET A-1
FILE NO.: 2489.00	Y- OF ---

CHAMLIN & ASSOCIATES, INC. © 2023
 Drawing Name: G:\Users\j2.02489-00-Spring Valley-Mini Park-Concession Stand 2024\CAD\A-2 TYPICAL BUILDING SECTION AND MISC DETAILS.dwg
 Last Modified: Monday, October 14, 2024 2:45:26 PM
 Plotted On: Monday, October 14, 2024 2:45:26 PM
 by: Tim Horris



REVISIONS	LEVEL	BY	DATE	DESCRIPTION

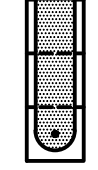


 PERU MORRIS
 OTTAWA MENDOTA
 ILLINOIS

CITY OF SPRING VALLEY
 PROPOSED MINI PARK
 RESTROOM / CONCESSION BUILDING
 SPRING VALLEY, ILLINOIS

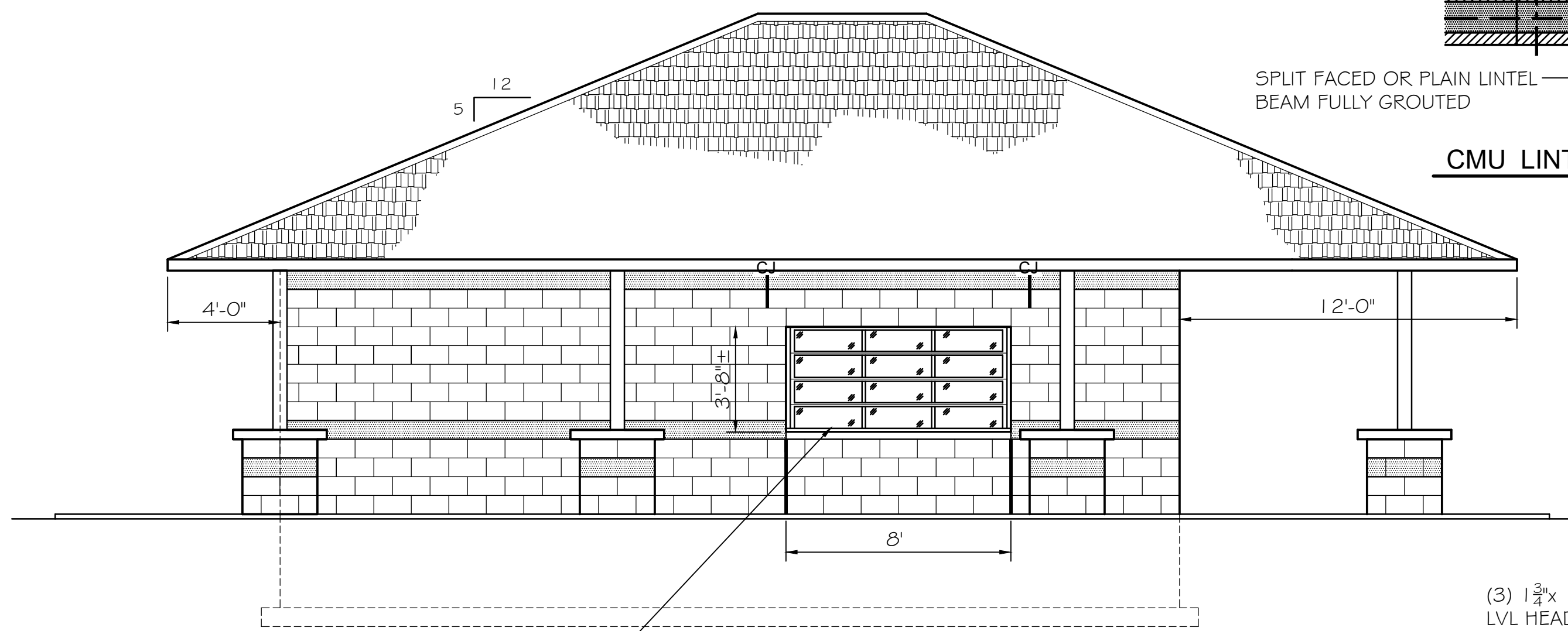
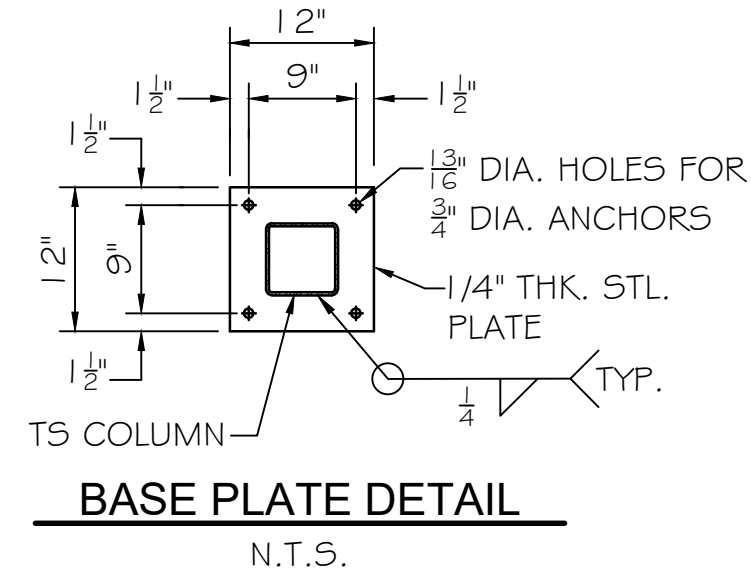
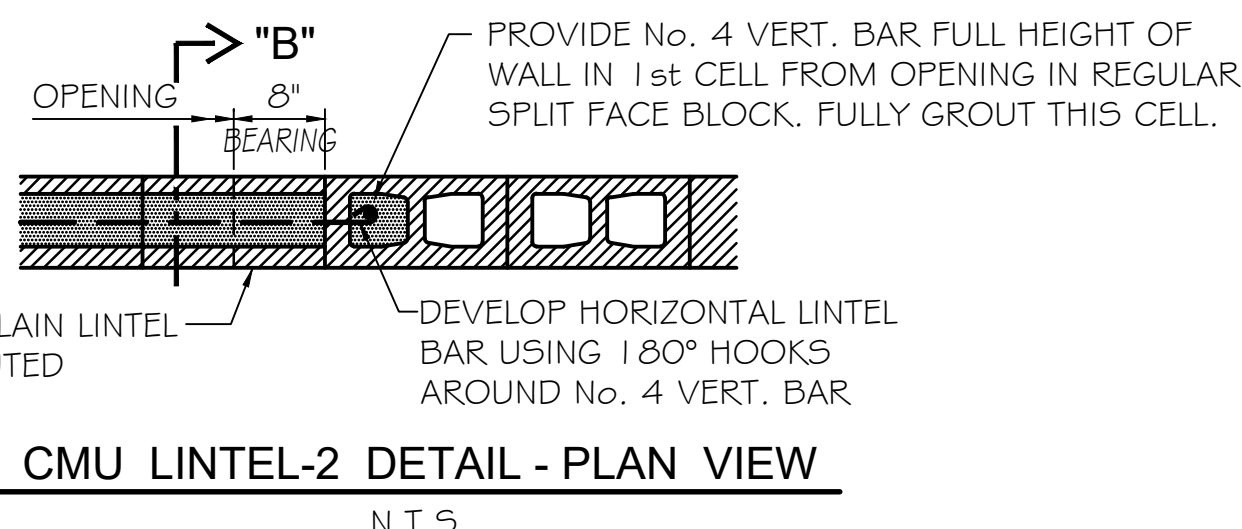
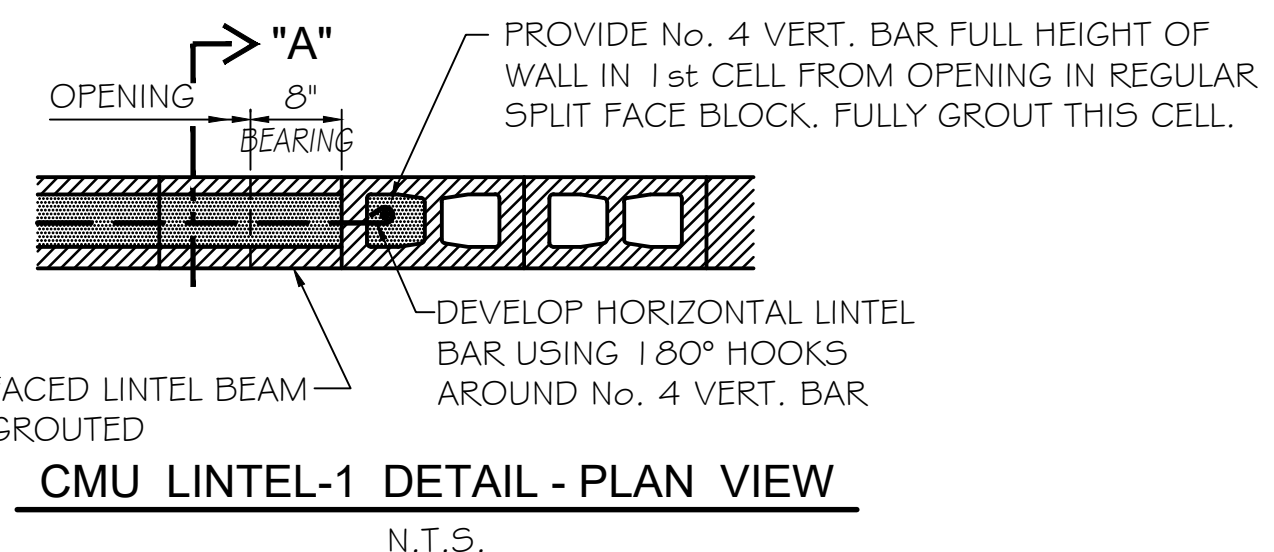
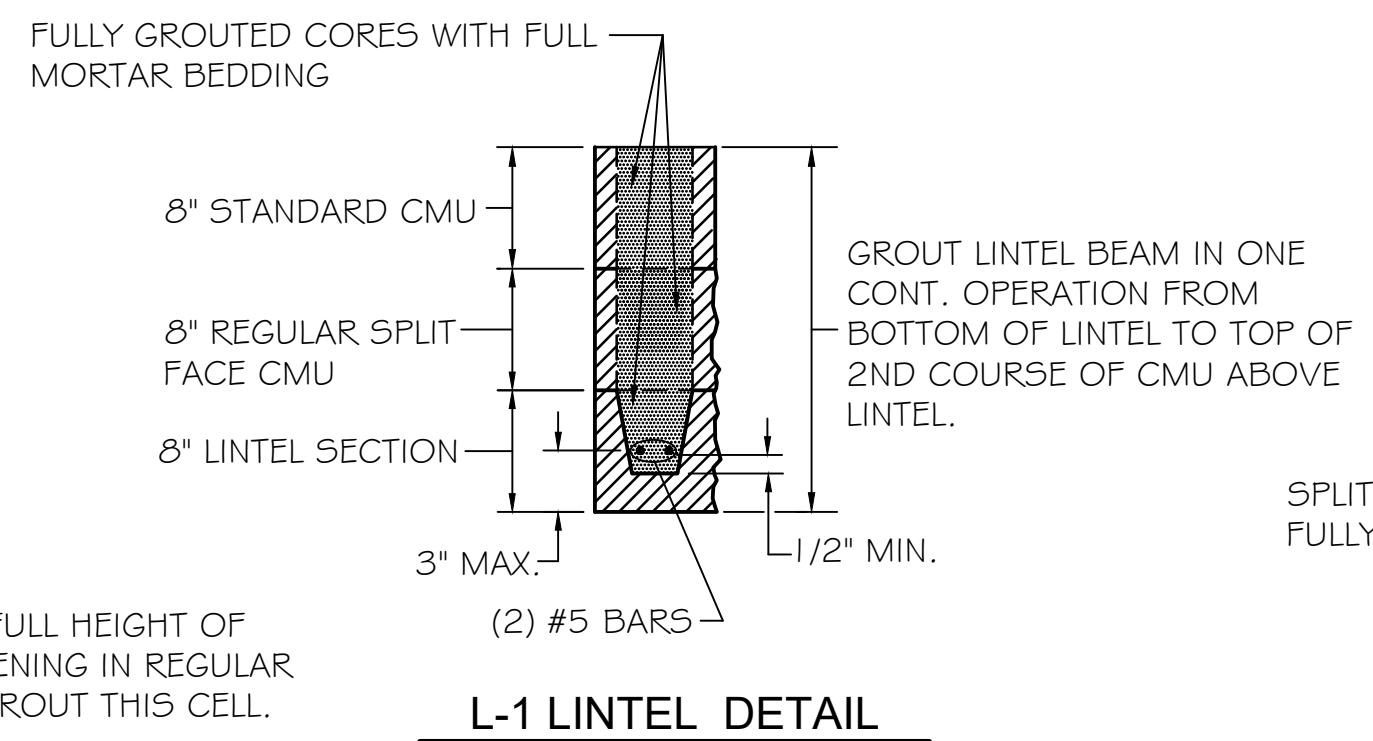
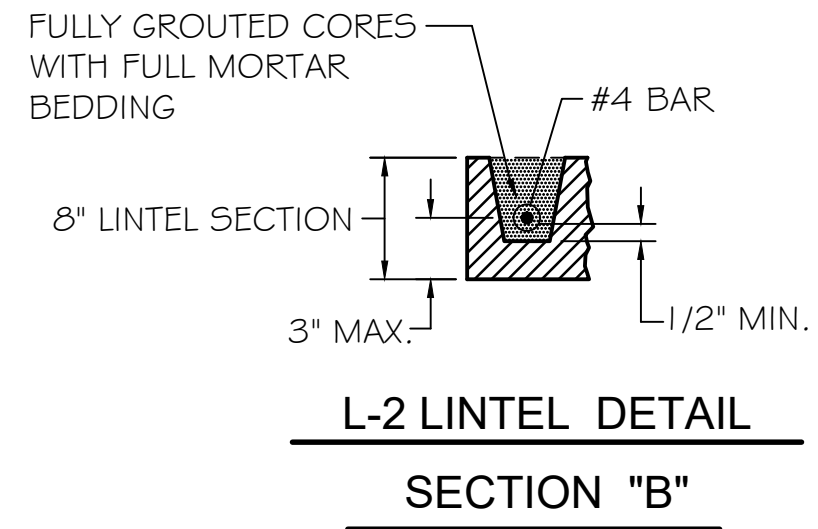
TYPICAL BUILDING SECTION AND
 MISCELLANEOUS DETAILS

BIDDING PLANS
 CURRENT AS OF: 10/04/2024
 SCALE: AS NOTED
 SHEET A2
 FILE NO.: 2489.00 Y- OF ---

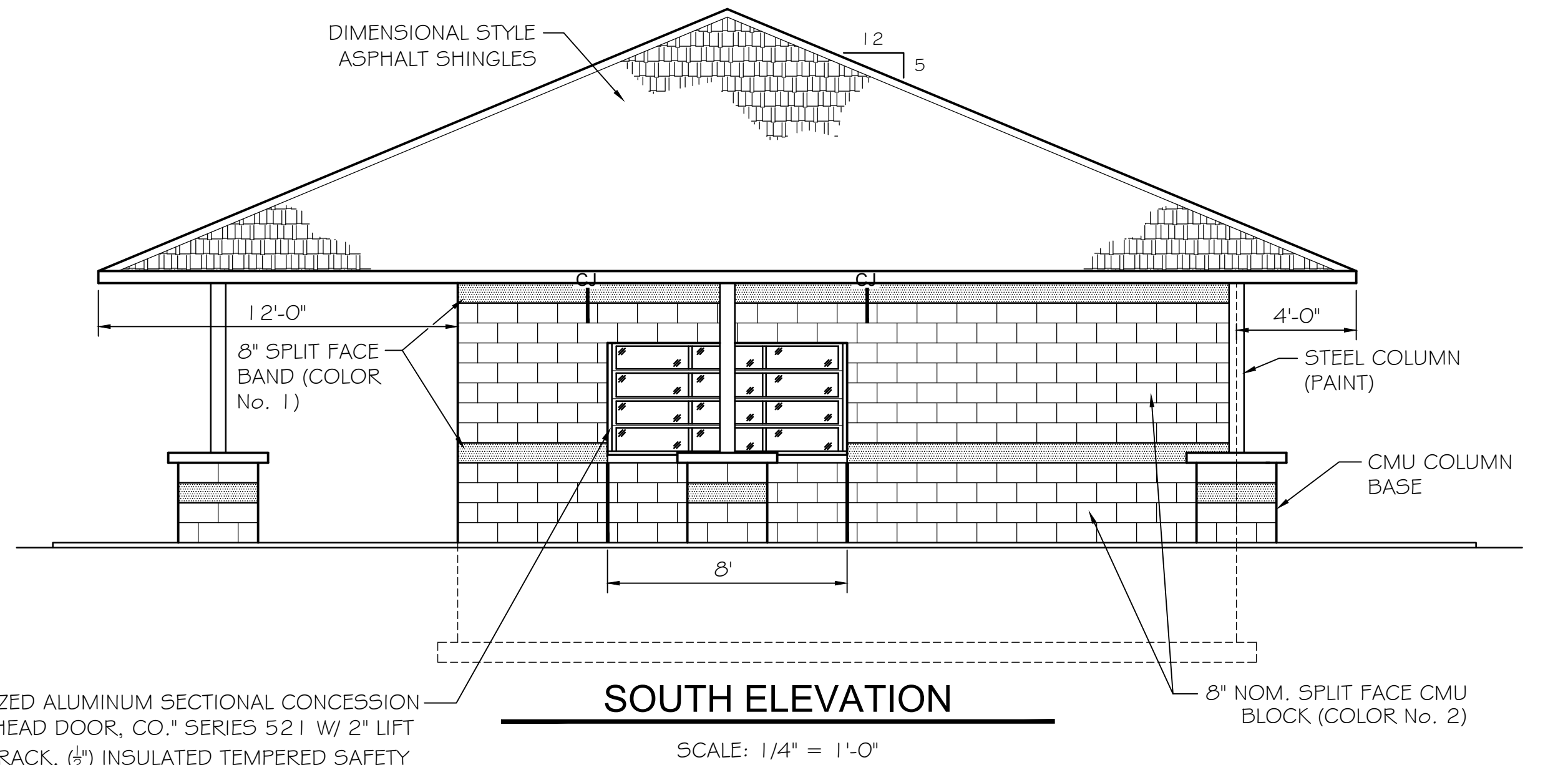
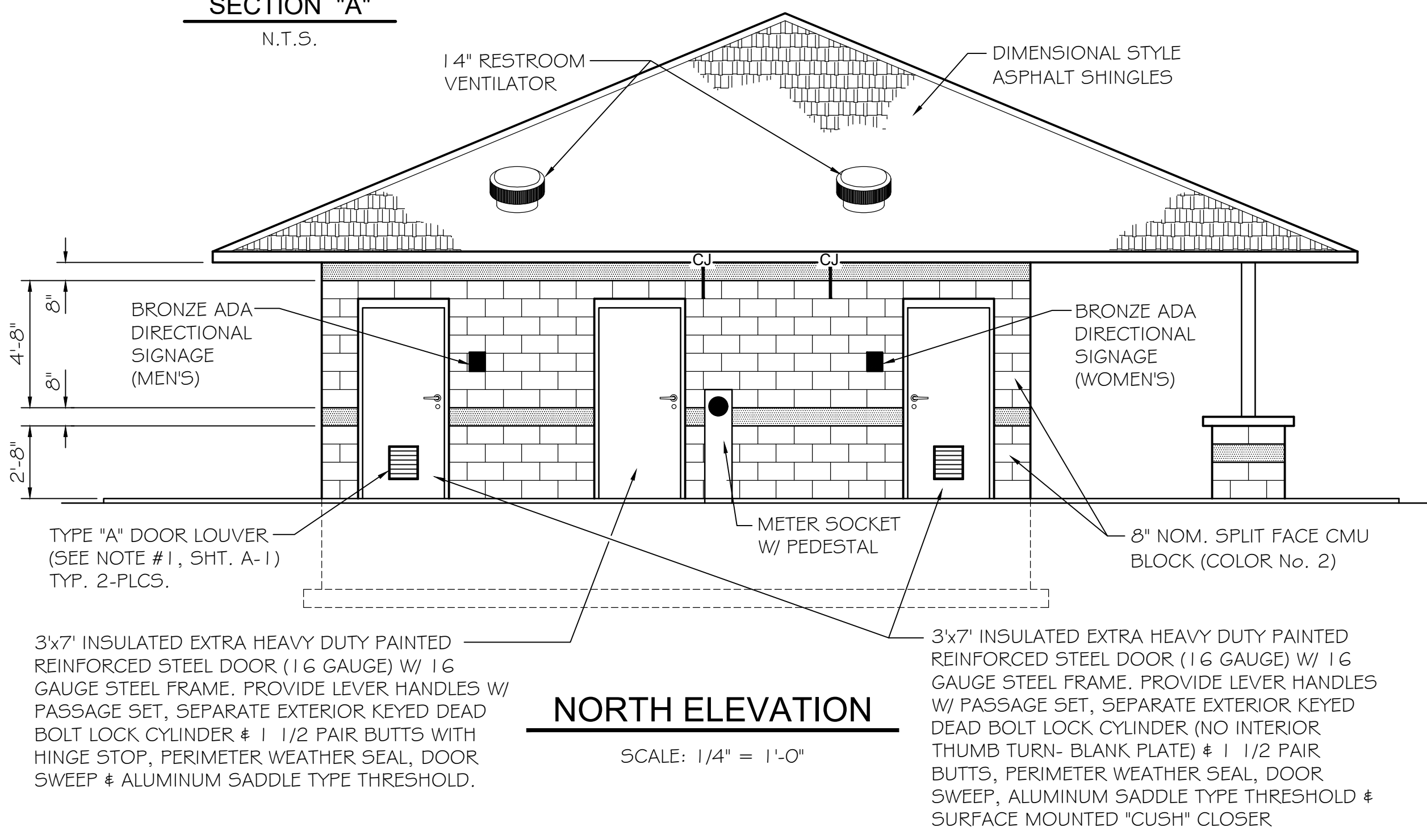
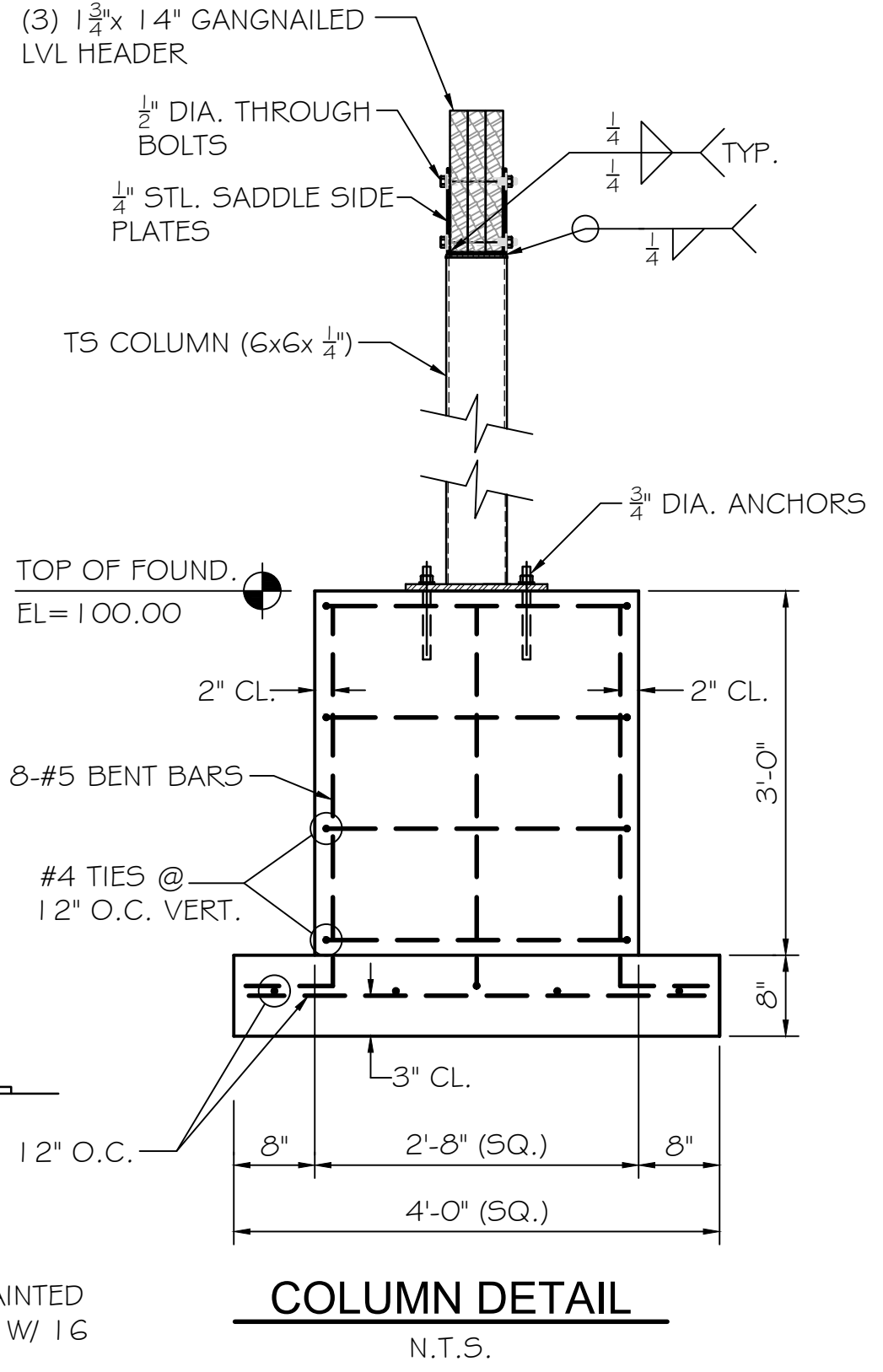
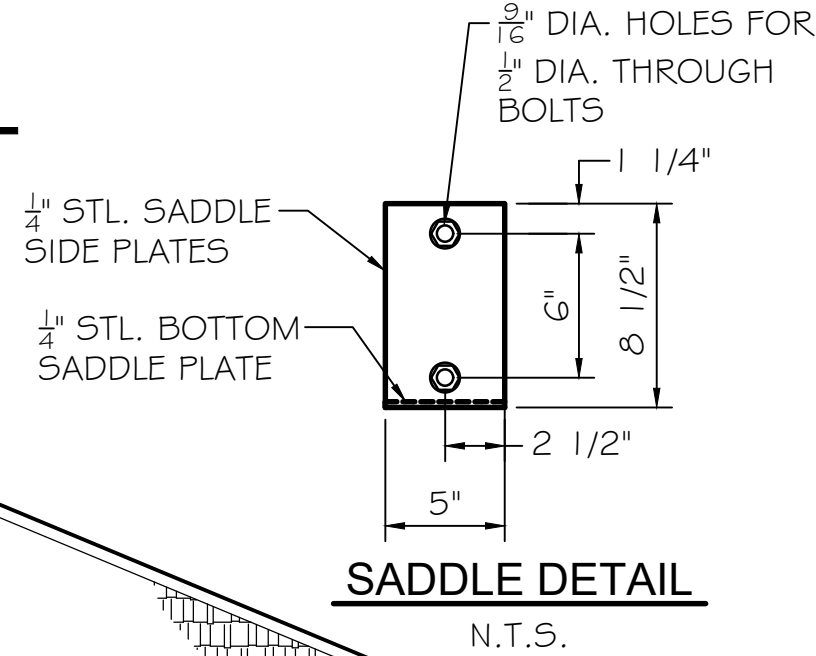
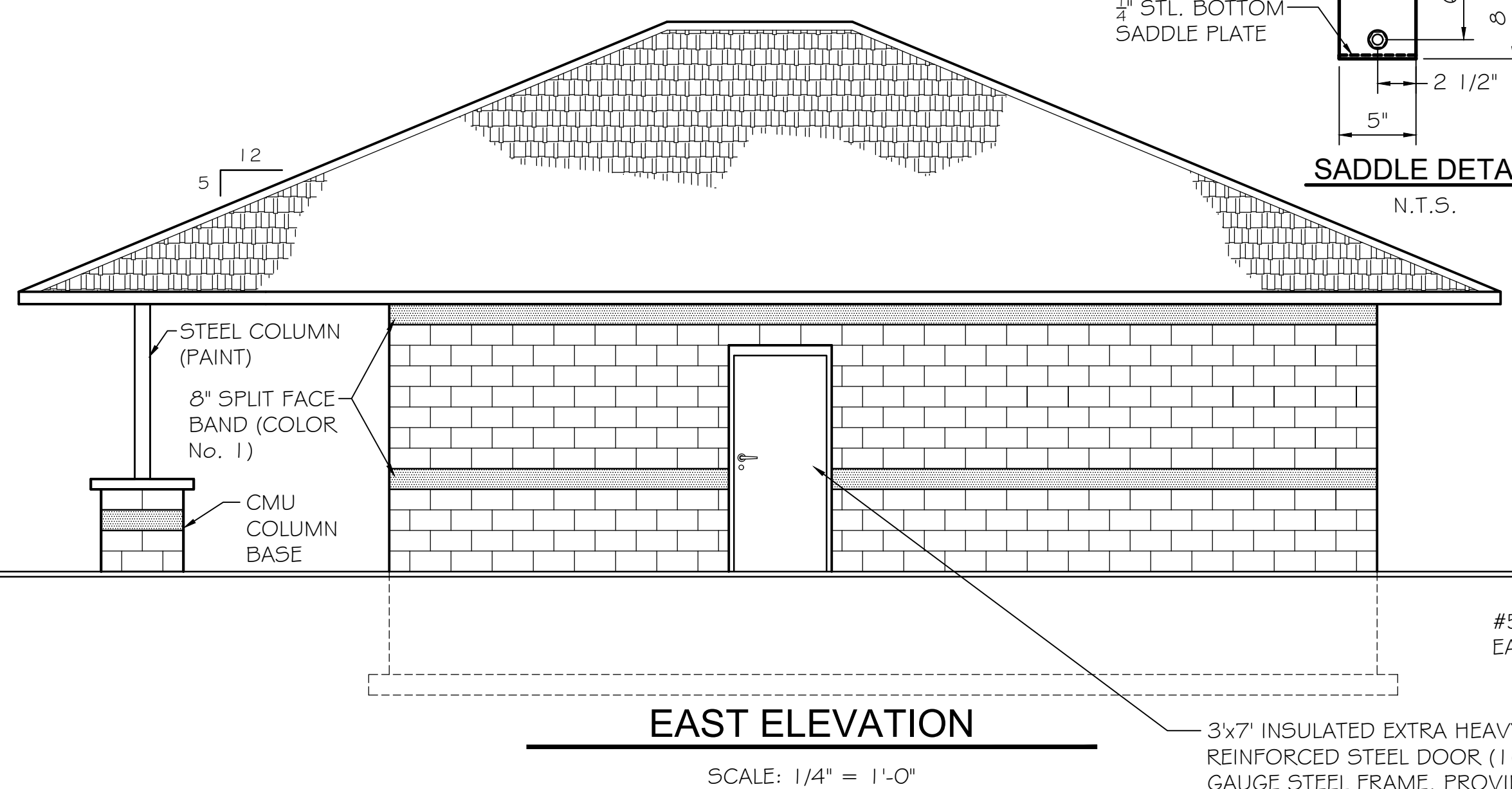
CHAMLIN & ASSOCIATES, INC. © 2023 Drawing Name: G:\Users\j2.02489-00-Spring Valley-Mini Park-Concession Stand 2024\CAD\A-3 Building EXTERIOR ELEVATIONS.dwg Last Modified: Monday, October 14, 2024 2:38:06 PM by Tim Horris

LINTEL SCHEDULE						
NUMBER	MATERIAL	TYPE	BEARING	MASONRY OPENING	LENGTH	REMARKS
L-1	24" CONC. LINTEL BEAM W/ 2-#5 BAR		8" (MIN.)	8'-0"	9'-4"	SEE DETAIL
L-2	8" CONC. BOND BEAM W/ (1)-#4 BAR		8" (MIN.)	3'-4"	AS REQUIRED	SEE DETAIL

- NOTES:**
- LINTELS AND ALL BLOCK ABOVE THE LINTEL SHALL RECEIVE FULL MORTAR BEDDING TOP, BOTTOM, AND SIDES OF EACH BLOCK.
 - CORES ASSOCIATED WITH ALL COURSES OF A LINTEL SHALL BE GROUTED AT THE SAME TIME.



CLEAR ANODIZED ALUMINUM SECTIONAL CONCESSION DOOR "OVERHEAD DOOR, CO." SERIES 521 W/ 2" LIFT CLEARANCE TRACK, (1/2") INSULATED TEMPERED SAFETY GLAZING (OBSCURED), INTERIOR LOCKING & MANUAL PULL ROPE



- GENERAL NOTES:**
- ALL DOOR HARDWARE SHALL BE HEAVY-DUTY COMMERCIAL GRADE "A" LEVER HANDLES WITH US2GD FINISH IN ACCORDANCE WITH THE ILLINOIS ACCESSIBILITY CODE & ADA STANDARDS.
 - ALL DOOR FRAMES SHALL BE PROVIDED WITH RESILIENT RUBBER DRILLED & FITTED SILENCERS.

3x7" INSULATED EXTRA HEAVY DUTY PAINTED REINFORCED STEEL DOOR (1/6 GAUGE) W/ 1/6 GAUGE STEEL FRAME. PROVIDE LEVER HANDLES W/ PASSAGE SET, SEPARATE EXTERIOR KEYPED DEAD BOLT LOCK CYLINDER & 1 1/2" PAIR BUTTS, PERIMETER WEATHER SEAL, DOOR SWEEP, ALUMINUM SADDLE TYPE THRESHOLD & SURFACE MOUNTED "CUSH" CLOSER

CLEAR ANODIZED ALUMINUM SECTIONAL CONCESSION DOOR "OVERHEAD DOOR, CO." SERIES 521 W/ 2" LIFT CLEARANCE TRACK, (1/2") INSULATED TEMPERED SAFETY GLAZING (OBSCURED), INTERIOR LOCKING & MANUAL PULL ROPE

DRAWN BY: MSR	REVISIONS			
	LEVEL	BY	DATE	DESCRIPTION
CHECKED BY: MSR				
DATE: 10/2024				

CA
CHAMLIN & ASSOCIATES

PERU MORRIS
OTTAWA MENDOTA
ILLINOIS

CITY OF SPRING VALLEY
PROPOSED MINI PARK
RESTROOM / CONCESSION BUILDING
SPRING VALLEY, ILLINOIS

EXTERIOR ELEVATIONS - ALT. ROOF PLAN

BIDDING PLANS

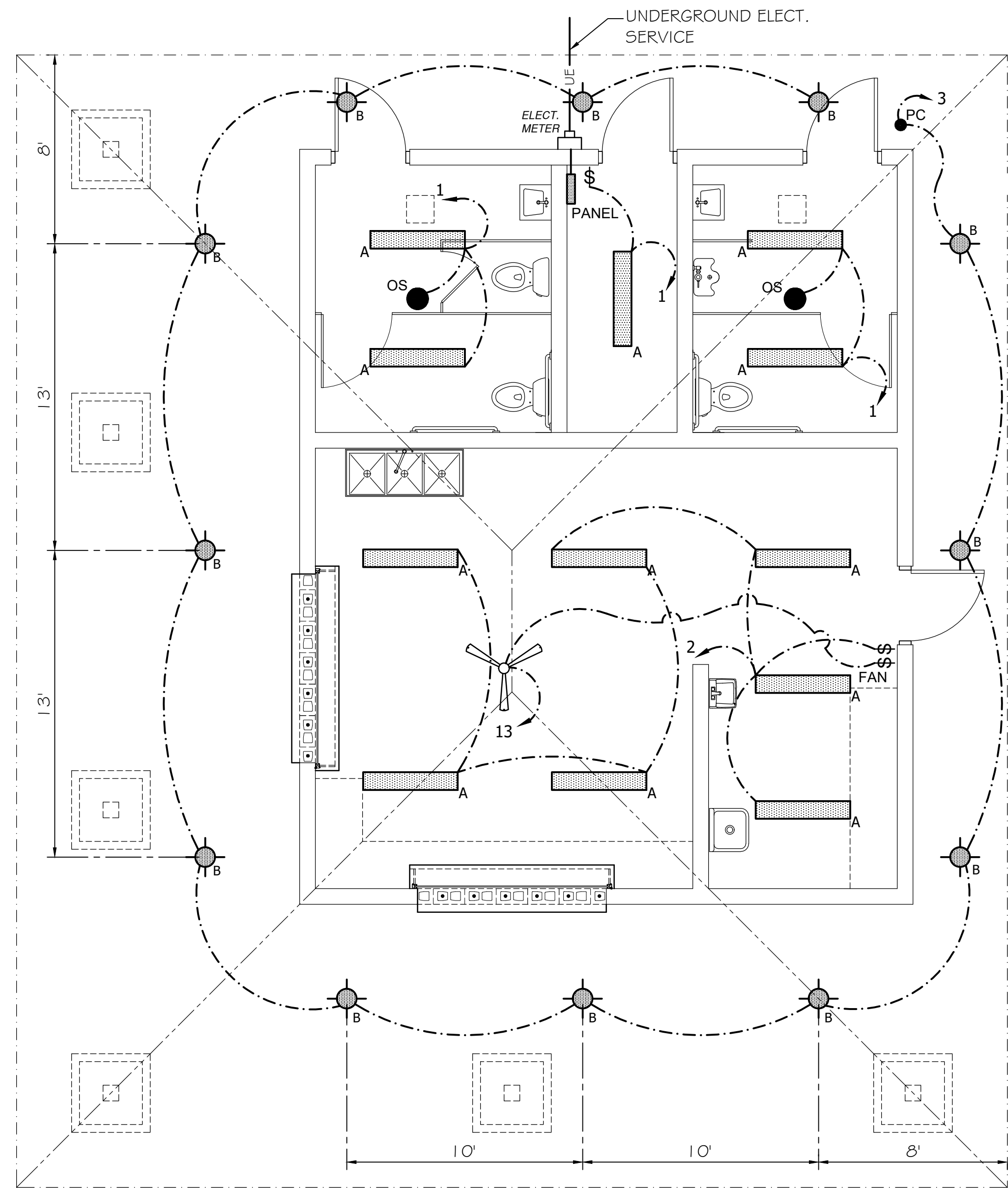
CURRENT AS OF: 10/01/2024

SCALE: AS NOTED

FILE NO.: 2489.00

SHEET A-3

CHAMLIN & ASSOCIATES, INC. © 2023
 Drawing Name: G:\Users\1202489-00-Spring Valley-Mini Park-Concession Stand 2024\CAD\E-1 Electrical Plan.dwg
 Last Modified: Monday, October 14, 2024 2:09:08 PM
 Plotted On: Monday, October 14, 2024 2:38:45 PM
 by: Tim Harris



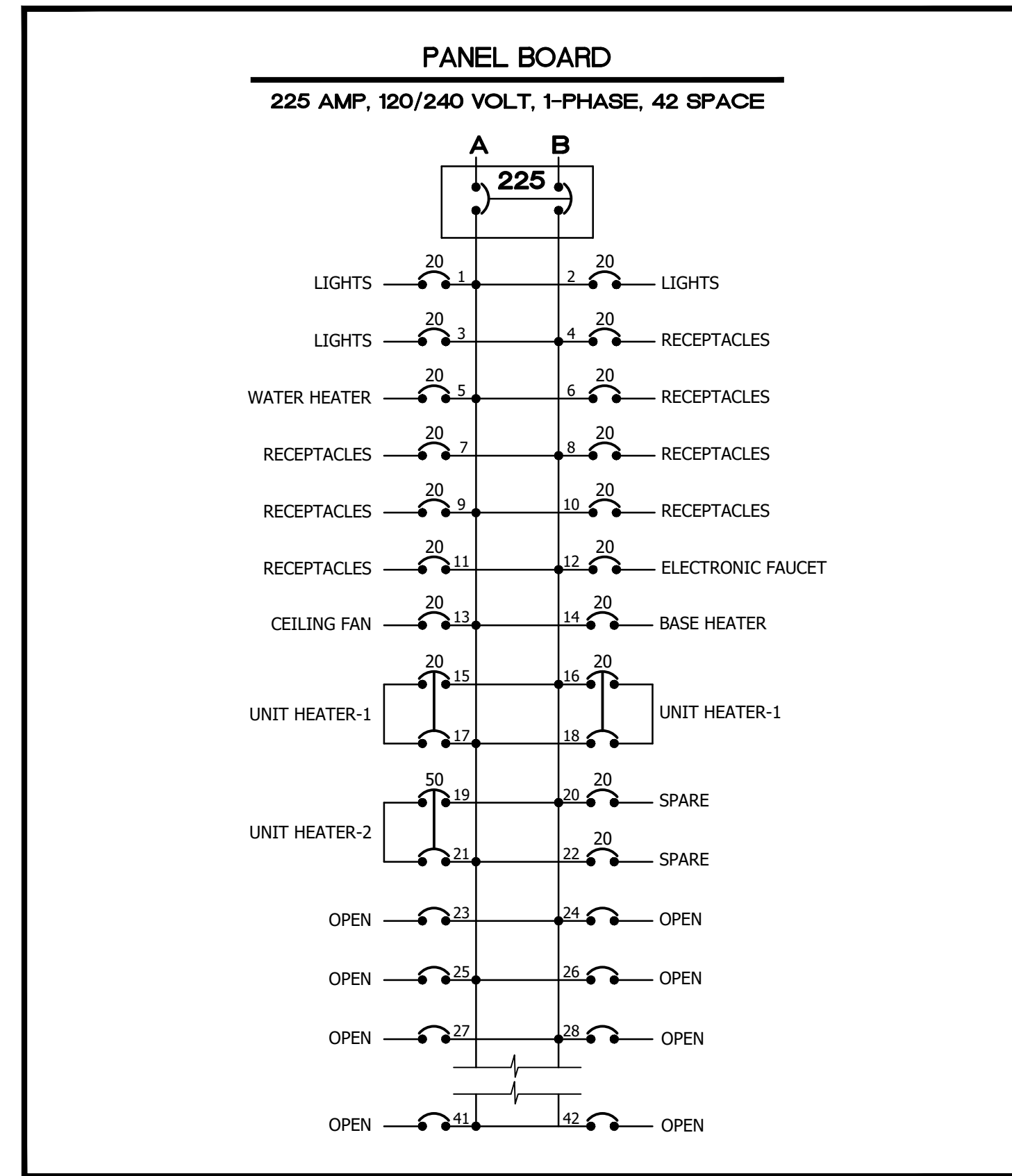
ELECTRICAL LIGHTING PLAN

SCALE: 1/4" = 1'-0"



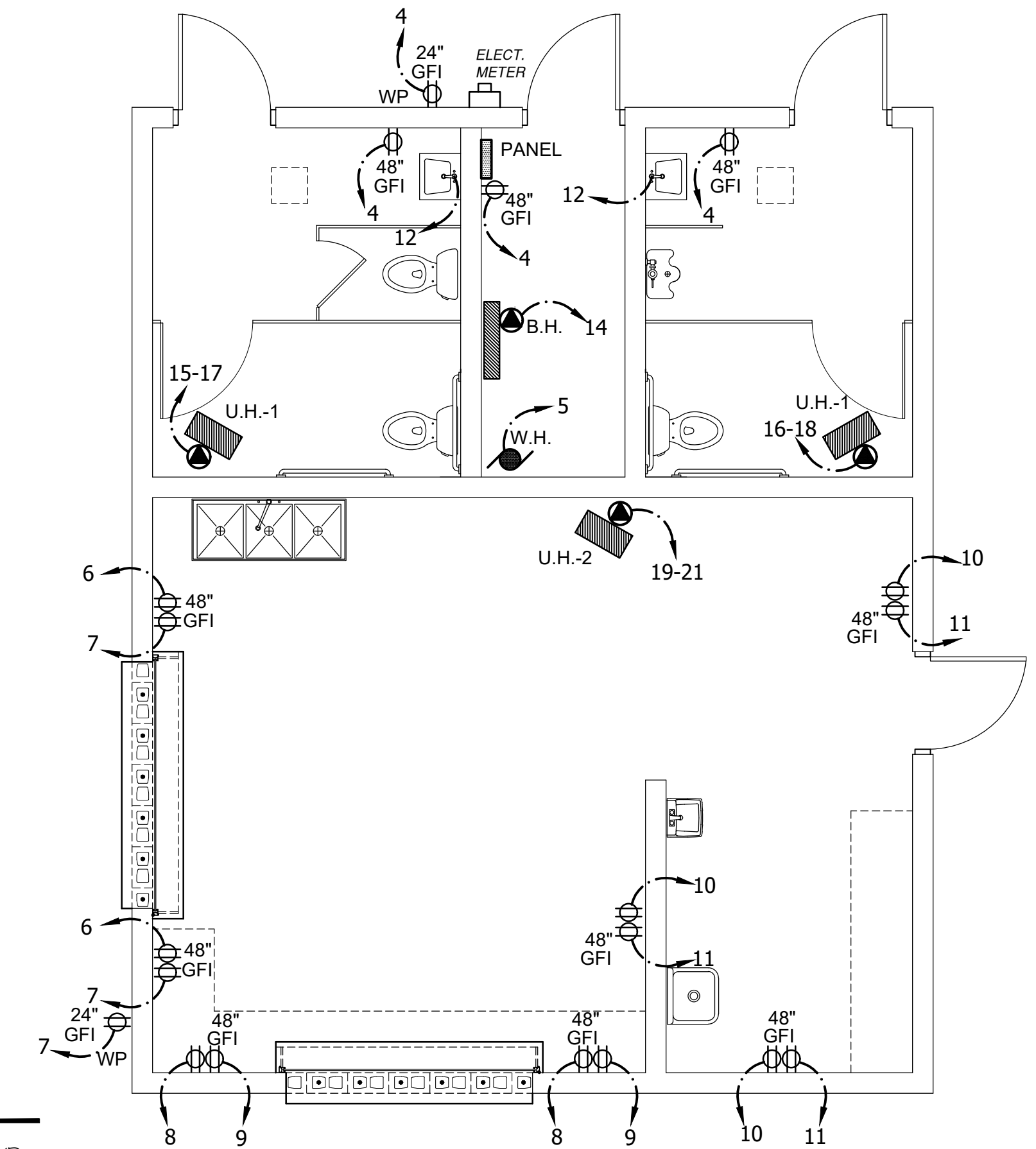
ELECTRICAL NOTES

- THESE DRAWINGS ARE SCHEMATIC IN NATURE AND REPRESENT A COMPLETE PROJECT. MODIFICATIONS TO THE WORK SHALL BE PROVIDED BY THIS CONTRACTOR TO COMPLY WITH PROJECT REQUIREMENTS. LOCATIONS OF EQUIPMENT SHOW A GENERAL ARRANGEMENT AND INTENDED FUNCTION. BEFORE INSTALLING EQUIPMENT, CHECK DOOR OPERATIONS AND ALL REQUIRED CLEARANCES TO AVOID INTERFERENCE WITH OTHER TRADES.
- INSTALL EQUIPMENT IN ACCORDANCE WITH THE MANUFACTURER'S RECOMMENDATIONS AND CONDITIONS FOR WARRANTIES AND GUARANTIES. PROVIDE ALL ACCESSORIES REQUIRED FOR A COMPLETE AND SATISFACTORY INSTALLATION.
- COMPLY WITH LOCAL AND APPLICABLE CODES. IN THE EVENT OF A CONFLICT, THE MOST STRINGENT SHALL GOVERN. SHOULD A CONFLICT ARISE BETWEEN CONSTRUCTION DOCUMENTS AND APPLICABLE CODES, WORK SHALL COMPLY WITH THE REQUIREMENTS OF THE ENFORCING CODE AUTHORITIES.
- ALL WIRING SHALL BE #12 THWN / THNN IN 3/4" CONDUIT UNLESS OTHERWISE NOTED.
- PROVIDE POWER SUPPLY TO WATER HEATER AND PROVIDE ALL PARTS AND LABOR REQUIRED FOR PROPER EQUIPMENT INSTALLATION. PLUMBING CONTRACTOR SHALL PROVIDE WATER HEATER IN PLACE.
- ALL RECEPTACLES ARE TO BE GROUND FAULT PROTECTED (GFI).
- ELECTRICAL CONTRACTOR SHALL VERIFY REQUIRED LOADS FOR EACH CIRCUIT AND EVENLY BALANCE PANEL BUSS BARS ACCORDINGLY.



LEGEND

- LED STRIP LIGHT FIXTURE-"LITHONIA" OR APPROVED EQUAL, DMW2 L24 4000LM PFL WD MVOLT G21 40K 80CRI
- LED DOWNLIGHT-"LITHONIA" OR APPROVED EQUAL, LBRG ALO1 5WW1 MS MWD 80CRI MVOLT UGZ/LBRGPFW WITH ADJUSTABLE OUTPUT AND CCT WITH 1000L/4000K, WET LOCATION (NEW CONST.). PROVIDE MOUNTING HARDWARE FOR SOFFIT INSTALLATION AND PHOTO CONTROL.
- OCCUPANCY SENSOR - "ACUITY CONTROLS, SENSOR SWITCH" MODEL CM PDT 9. (DAMP LISTED)
- PANELBOARD - "SQUARE D" "NQ", TYPE 2, 200 AMP, 3-WIRE, 1-PHASE, 42 SPACE DISTRIBUTION PANEL W/ MAIN BREAKER (PROVIDE REQUIRED EQUIPMENT BREAKERS AS SHOWN ON THE PLANS)
- TANKLESS WATER HEATER WATER HEATER - PROVIDE 120V POWER AS REQUIRED
- 24" 20 AMP DUPLEX RECEPTACLE (24" A.F.F.)
- 48" 20 AMP DUPLEX RECEPTACLE (48" A.F.F.)
- 20 AMP DUPLEX RECEPTACLE (GROUND FAULT INTERRUPTER)
- SINGLE POLE SWITCH (48" A.F.F.)
- WEATHER PROOF OUTLET WITH GFI PROTECTION
- INDICATES ELECTRICAL CIRCUIT
- CEILING FAN - 42" HEAVY DUTY COMMERCIAL 3-BLADE, DIRECT DRIVE, WHITE. CONTROL WITH (1) SPEED CONTROLLER. CONTROLLER & FAN TO BE PROVIDED & INSTALLED BY THE ELECTRICAL CONTRACTOR. PROVIDE REQUIRED DOWNROD.
- PHOTO CONTROL - INSTALL IN BUILDING SOFFIT OR APPROVED LOCATION TO CONTROL ENTRY RECESSED LIGHT FIXTURES.
- FLOOR BASE HEATER - "QMARK" 25426W, 1800 BTUH, 500 W, 240 V, 1-PHASE, 30" LG. WHITE W/ INTEGRAL ADJUSTABLE THERMOSTAT.
- UNIT HEATER - "QMARK" MUH0321, (OR APPROVED EQUAL), 3kw, 240 V, 1-PHASE, W/ INTEGRAL ADJUSTABLE THERMOSTAT AND WALL HUNG BRACKET.
- UNIT HEATER - "QMARK" MUH072, (OR APPROVED EQUAL), 7.5kw, 240 V, 1-PHASE, W/ INTEGRAL ADJUSTABLE THERMOSTAT AND WALL HUNG BRACKET.



ELECTRICAL POWER PLAN

SCALE: 1/4" = 1'-0"



DRAWN BY: MSR	REVISIONS		
CHECKED BY: MSR	LEVEL	BY	DATE
DATE: 7-2024			
			DESCRIPTION

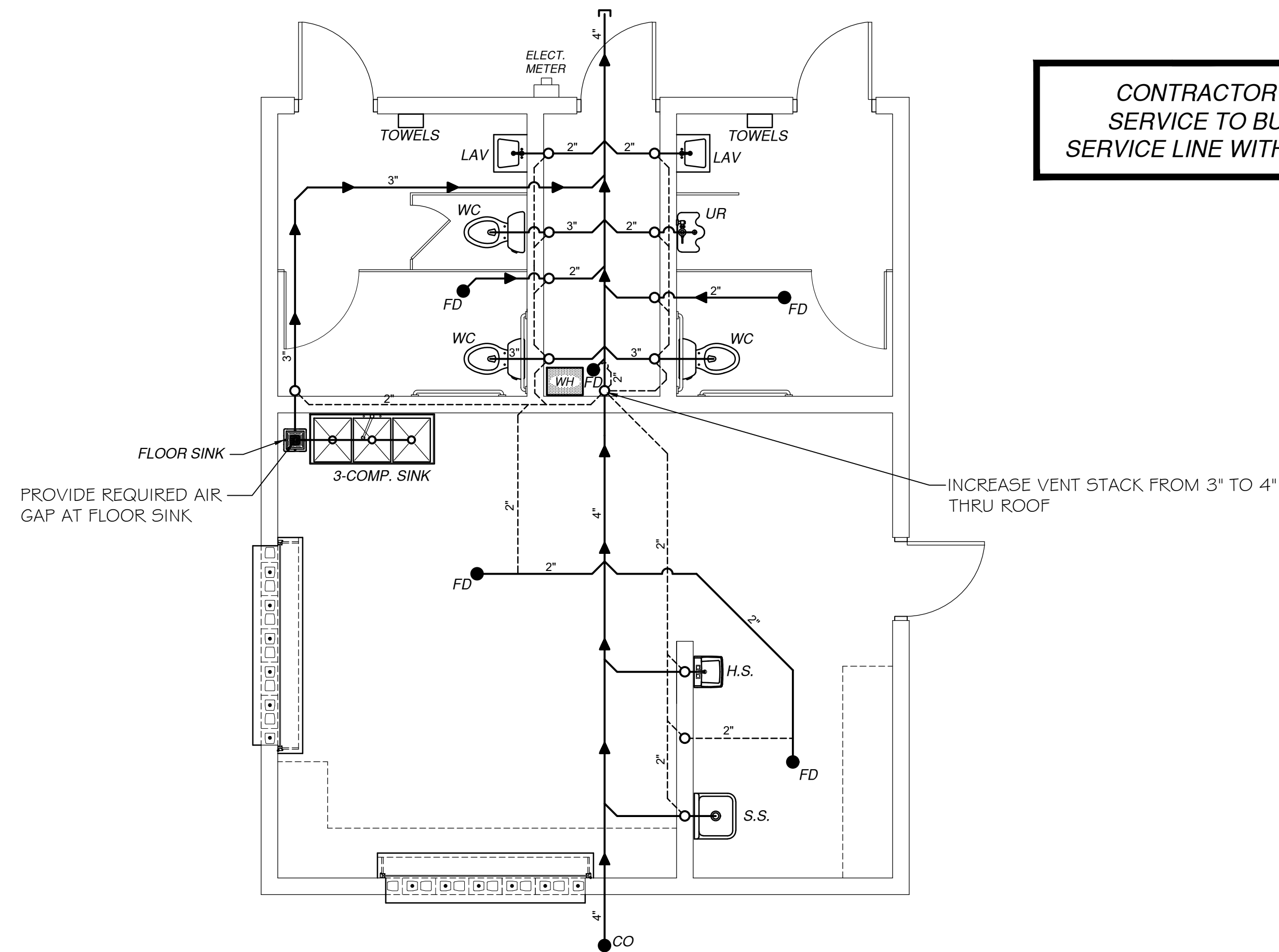
PERU MORRIS
 OTTAWA MENDOTA
 ILLINOIS

CITY OF SPRING VALLEY
 PROPOSED MINI PARK
 RESTROOM / CONCESSION BUILDING
 SPRING VALLEY, ILLINOIS

ELECTRICAL PLAN

BID SET
 CURRENT AS OF: 10/04/2024
 SCALE: AS NOTED
 FILE NO.: 2489.00 Y- OF --- SHEET E-1

CONTRACTOR TO WORK WITH CITY TO PROVIDE NEW GAS SERVICE TO BUILDING. CONTRACTOR TO INSTALL NEW GAS SERVICE LINE WITHIN BUILDING TO WATERHEATER IN MECH ROOM.

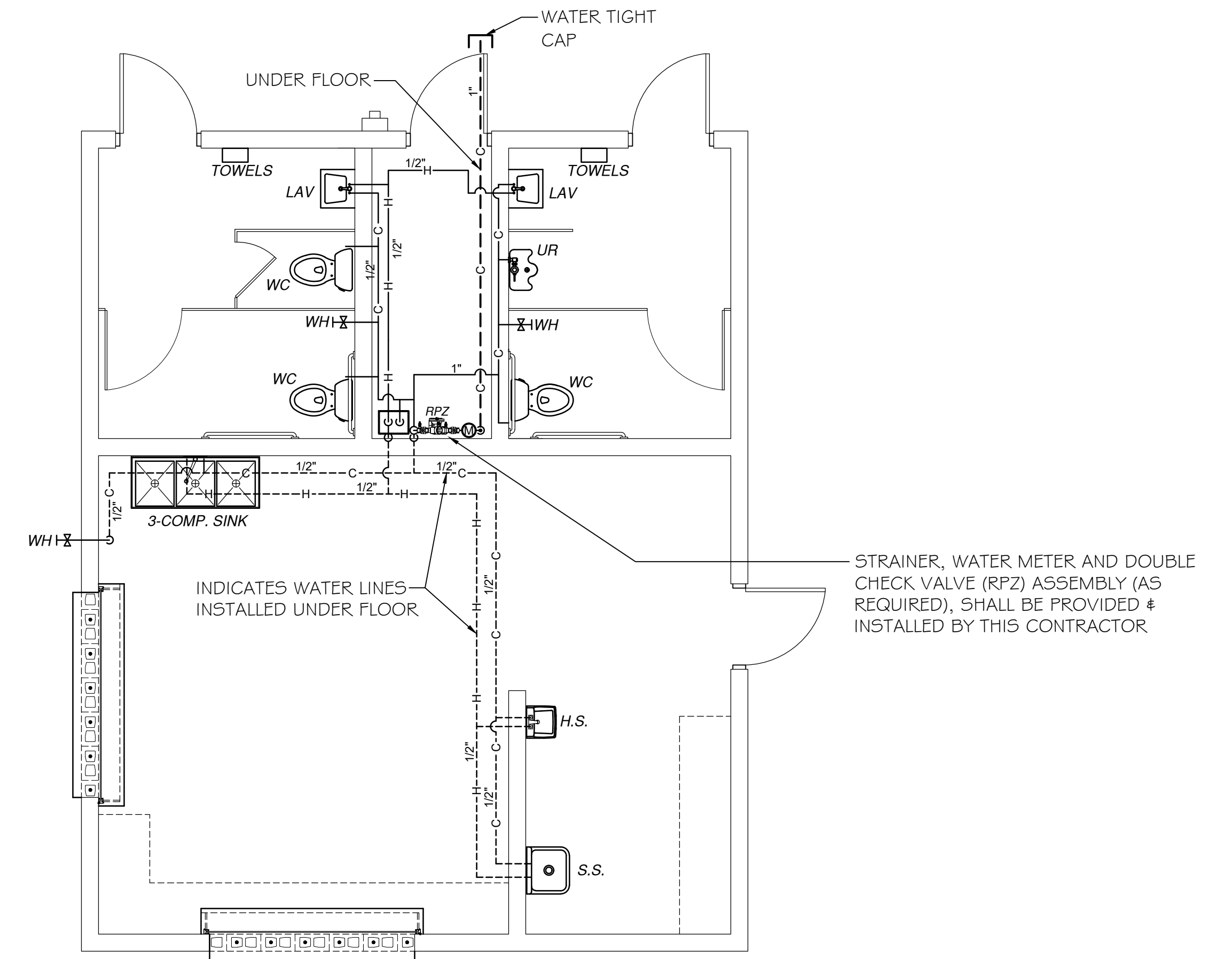


WASTE PIPING PLAN

SCALE: 1/4"=1'-0"



PLUMBING LEGEND

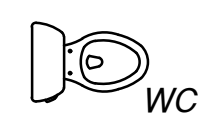


SUPPLY PIPING PLAN

SCALE: 1/4"=1'-0"



STRAINER, WATER METER AND DOUBLE CHECK VALVE (RPZ) ASSEMBLY (AS REQUIRED), SHALL BE PROVIDED & INSTALLED BY THIS CONTRACTOR



WATER CLOSET - "AMERICAN STANDARD" "CADET 3", WHITE VITREOUS CHINA, ELONGATED BOWL, 12" ROUGH-IN, 16 1/2" RIM HEIGHT, 1.6 GPF, W/ OPEN FRONT SEAT (VERIFY LEVER SIDE). TANK TOP SHALL BE LOCKABLE.



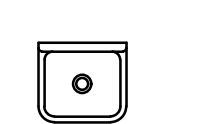
LAVATORY - "AMERICAN STANDARD" "LUCERNE" (BARRIER FREE), WHITE VITREOUS CHINA WALL HUNG W/ CARRIER, OFFSET DRAIN, ANGLE SUPPLIES WITH STOPS AND "CHICAGO FAUCET" "THE HYTRONIC" ELECTRONIC FAUCET-#116.101.AB.1., DECK MOUNT W/ INFRARED DUAL BEAM SENSOR. PROVIDE APPROVED INSULATED COVERS ON ALL EXPOSED PIPES.



HAND WASH SINK - "AMERICAN STANDARD" "COMRADE" O124.024, WHITE VITREOUS CHINA WALL HUNG W/ CARRIER, DRAIN, ANGLE SUPPLIES WITH STOPS AND "MONTERREY" 5500.175 TWO HANDLE FAUCET.



URINAL - "AMERICAN STANDARD" "WASHBROOK" ULTRA HIGH EFFICIENT, 3/4" INLET TOP SPUD, 0.125 TO 1.0 gpf FLUSH W/ 3/4" FLUSH VALVE.



SERVICE SINK "AMERICAN STANDARD" OR APPROVED EQUAL MODEL 7692.008 "LAKEWELL" W/ 3" TRAP STAND, STAINLESS STEEL RIM GUARDS AND ENAMELED TRAP WITH STRAINER. PROVIDE WALL HANGER AND "AMERICAN STANDARD" NO. 8354.112 (8") FAUCET WITH CAST BRASS SPOUT WITH BUCKET HOOK, WALL BRACE AND ROUGH CHROME FINISH.

3-COMPARTMENT SINK

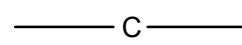
"REGENCY" - THREE-COMPARTMENT SINK 60" L. x 22 1/2" W. x 44 3/4" H. (3) 17" x 17" x 12" BOWLS, 16 GAUGE TYPE 304 STAINLESS STEEL, (10 3/4") BACKSPASH, ROLLED EDGES, REMOVABLE DRAIN BASKETS. PROVIDE REGENCY (OR APPROVED EQUAL) 10" SWING SPOUT, CHROME PLATED BRASS FAUCET.

FLOOR SINK

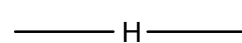
"WADE" 8" SQUARE TOP, CAST IRON FLOOR SINK OR APPROVED EQUAL WITH ALUMINUM INTEGRAL DOME STRAINER AND CAST IRON GRATE WITH 4" ROUND FUNNEL.



WALL HYDRANT-"ZURN" - Z1333-C STAINLESS FACE W/ ANGLED NOZZLE, NON-FREEZE, AUTOMATIC DRAINING AND ANTI-SIPHON.



COLD WATER SUPPLY



HOT WATER SUPPLY



WASTE PIPE



VENT PIPE

GRAB BARS

1 1/4" DIA., HEAVY DUTY 304 STAINLESS STEEL, CONCEALED MOUNTED AND STANDARD SATIN FINISH, LENGTH OF GRAB BARS SHALL BE 36" BEHIND W.C. AND 42" ON THE SIDE WALL BY THE WATER CLOSET.

MIRROR

"BOBRICK" MODEL #B-165 24"x 36", 304 STAINLESS STEEL, SATIN FINISH W/ CONCEALED MOUNTING BRACKET. MOUNT AS REQUIRED BY THE ILLINOIS ACCESSIBILITY CODE. (TYP @ EACH LAVATORY)

TOILET PAPER DISPENSER

"BOBRICK" MODEL #B-5288 SURFACE MOUNTED, MULTI-ROLLED, HIGH-IMPACT ABS W/ CONCEALED MOUNTING AND LOCKING SECURE DOOR. 1 PER WATER CLOSET STALL (LOCATE IN THE FIELD)

SOAP DISPENSER

"BOBRICK" MODEL #B-5050 SURFACE MOUNTED, HIGH-IMPACT ABS W/ PUSH BUTTON AND SPOUT AND LOCKING SECURE LID. 1 PER RESTROOM (LOCATE IN THE FIELD)

WASTE RECEPTACLE

"BOBRICK" MODEL #B-275 SURFACE MOUNTED, STAINLESS STEEL 22 GAUGE SATIN FINISH W/ VINYL LINER (20 GALLON CAPACITY). 1 PER RESTROOM (LOCATE IN THE FIELD)

TOWEL DISPENSER

"BOBRICK" SURFACE MOUNTED, 304 22 GAUGE STAINLESS STEEL, SATIN FINISH W/ TUMBLER LOCK, HINGED AT BOTTOM AND REFILL INDICATOR.



TANKLESS W.H.

"NAVIEN" NPE-210A2 (OR APPROVED EQUAL) HIGH EFFICIENCY, WALL HUNG, GAS WATER HEATER. PROVIDE INTAKE / EXHAUST VENT PIPING AND ISOLATION VALVES. ELECTRIC CONTRACTOR TO PROVIDE POWER TO UNIT.



CAST IRON FLOOR DRAIN WITH BRONZE TOP AND INTEGRAL CLEANOUT (VERIFY LOCATION IN FIELD).



CAST IRON CLEAN-OUT BODY W/ CAST BRONZE TOP SECURED TO CASTING W/ SCREWS (VERIFY LOCATION IN FIELD WITH ENGINEER)

PLUMBING NOTES :

- CONTRACTOR SHALL PROVIDE ALL HOT & COLD WATER SUPPLY PIPING TO FIXTURES SHOWN. PIPING SHALL BE CONCEALED WITHIN WALLS IN REST ROOM. PIPING SHALL BE COPPER TUBING TYPE "L" (USE TYPE "K" UNDER CONCRETE SLABS). ALL PIPING ROUTING SHALL BE APPROVED BY THE ENGINEER PRIOR TO PLACEMENT.
- CONTRACTOR SHALL PROVIDE SEWER & WATER TO A POINT BEYOND PERIMETER OF SIDEWALK. VERIFY DEPTH AND LOCATIONS W/ THE CITY.
- FURNISH AND INSTALL INDICATED PLUMBING FIXTURES COMPLETE WITH FAUCETS, STOP VALVES AND TRAPS.
- PROVIDE VALVES AT ALL FIXTURES AND BRANCH PIPING AS REQUIRED TO ACCOMPLISH INDIVIDUAL FIXTURE ISOLATION THROUGH OUT.
- PLUMBING SHALL COMPLY WITH THE MOST RECENT ILLINOIS STATE PLUMBING CODE.
- ALL FIXTURES AND HARDWARE SHALL BE INSTALLED IN STRICT ACCORDANCE WITH THE ILLINOIS ACCESSIBILITY CODE AND A.D.A.
- ALL WASTE & VENT PIPING SHALL BE INSTALLED AT (1/8") PER FT. SLOPE. VENT STACKS SHALL INCREASE TO (3") THRU ROOF & BE CONCEALED IN WALLS WHERE FEASIBLE OR AS APPROVED OTHERWISE. PROVIDE REQUIRED AND APPROVED ROOF VENT FLASHINGS FOR EACH VENT STACK PENETRATION.
- PROVIDE PIPE SAFETY COVERS FOR SUPPLY & WASTE PIPING AS REQUIRED BY THE ILLINOIS STATE PLUMBING CODE. COVERS SHALL BE MANUF. BY "PLUMBEREX SPECIALTY PRODUCTS, INC." OR APPROVED EQUAL.
- PROVIDE REQUIRED MIXING VALVE, RELIEF VALVE DISCHARGE PIPE AND THERMAL EXPANSION TANK FOR THE NEW WATER HEATER.
- COORDINATE VALVING IN MECH ROOM WITH CITY FOR METHOD OF WINTERIZING FACILITY.
- DO NOT RUN WATER LINES IN ATTIC SPACE, IN EXTERIOR WALLS OR ON FINISH WALLS (OTHER THAN MECH. ROOM WALLS).

CHAMLIN & ASSOCIATES, INC. © 2023 Drawing Name: G:\Users\j2.02489-00-Spring Valley-Mini Park-Concession Stand 2024\CAD\P-1 Plumbing Plan.dwg Last Modified: Monday, October 14, 2024 2:27:50 PM Plotted On: Monday, October 14, 2024 2:39:27 PM By: Tim Harris

DRAWN BY: MSR	REVISIONS			
CHECKED BY: MSR	LEVEL	BY	DATE	DESCRIPTION
DATE: 7-2024				

CA
Chamlin & Associates

PERU MORRIS
OTTAWA MENDOTA
ILLINOIS

CITY OF SPRING VALLEY
PROPOSED MINI PARK
RESTROOM / CONCESSION BUILDING
SPRING VALLEY, ILLINOIS

PLUMBING PLAN

BID SET

CURRENT AS OF: 7.29.2024

SCALE: AS NOTED SHEET P-1

FILE NO.:2489.00 Y- OF ---